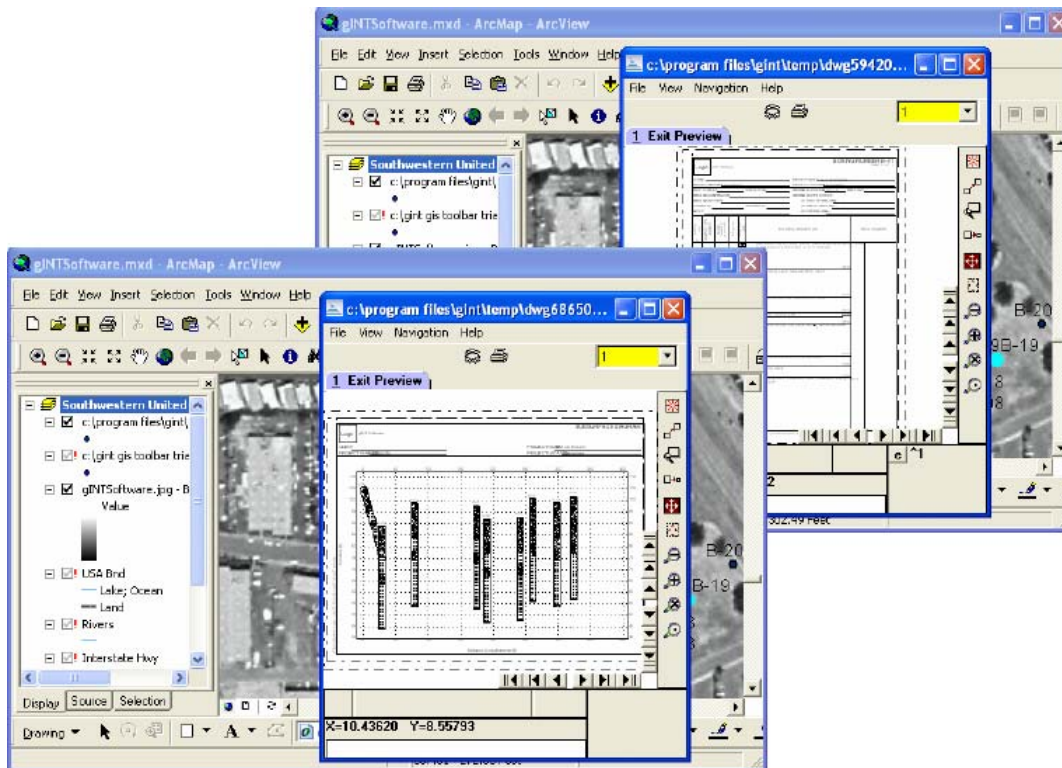


gINT User Guide

gINT for ArcGIS, Version 1



The information in this publication is subject to change without notice and does not represent a commitment on the part of gINT Software. The software described in this document is furnished under a license agreement or nondisclosure agreement. The software must be used or copied only in accordance with the terms of the agreement.

Printed November 6, 2008

Disclaimer: Every effort was made to ensure accuracy. However, gINT Software makes no warranty as to the correctness of this information or the supplied files.

All rights reserved worldwide. No part of this publication may be reproduced in any form or by any means without the prior written consent of gINT Software. Comments are welcome and become the property of gINT Software. gINT® is a registered trademark of gINT Software. All other products mentioned are trademarks or registered trademarks of the respective producers.

© Copyright 1985-2008 by gINT Software, Inc.
Printed in the United States of America

Web Site: www.gintsoftware.com
E-mail: support@gintsoftware.com
Sales: sales@gintsoftware.com

Table of Contents

Installation and Setup	1
<i>Installation Process Overview</i>	1
<i>System Requirements</i>	1
Installing the gINT for ArcGIS Toolbar	2
<i>Configuring gINTArcGISTool.ini</i>	5
Adding the Toolbar to ArcGIS	5
<i>If You Installed the Trial Version</i>	8
Licensing the gINT Toolbar for ArcGIS.....	8
<i>Licensing Additional Network Workstations</i>	9
Using gINT for ArcGIS	11
The gINT Project Import Tool.....	11
The Selection Tool.....	15
<i>Left-Click Functionality</i>	15
<i>Right-Click Functionality</i>	15
The Fence Tool.....	19
The Properties Tool	22
Report Output	24
gINT Queries	27
Data Display	28
Unlicensing gINT for ArcGIS	29
For Further Assistance	32

Installation and Setup

This reference manual is intended to provide an overview of how to install and use the gINT for ArcGIS toolbar feature within an ArcGIS application. It does not provide instructions for using ArcGIS applications. Please refer to your ArcGIS documentation from ESRI for information on using ArcGIS products. See the [For Further Assistance](#) section at the end of this document for additional resources.

gINT for ArcGIS is an add-on toolbar for ArcGIS applications from ESRI. gINT for ArcGIS is compatible with any of the following applications, Version 8 or later:

- ArcView
- ArcEditor
- ArcInfo

With the gINT Toolbar for ArcGIS, users of ArcGIS applications can:

- ☞ Link gINT project data with their ArcGIS projects.
- ☞ Open and view gINT projects from within ArcGIS applications.
- ☞ Preview, print, and export gINT reports from within ArcGIS applications.

Using gINT for ArcGIS, you can add the dimension of subsurface data to your other data layers in ArcGIS. This document will guide you through the installation and activation processes, and help you get started using this simple--yet powerful--tool.

Installation Process Overview

There are several installation steps and procedures that are involved before you can use the gINT for ArcGIS Toolbar within an ArcGIS application. This chapter will cover the required installation tasks in the following order:

1. Installing the gINT ArcGIS Toolbar program
 2. Adding the toolbar to your ArcGIS application
 3. Registering your gINT Toolbar for ArcGIS license (for a standalone or network)
- ☞ **Important:** You must have a licensed or trial version of gINT Software and a compatible ArcGIS application installed to run the gINT Toolbar for ArcGIS. These software programs should already be installed prior to running the gINT for ArcGIS Toolbar installation program.

System Requirements


The following software is required to run the gINT Toolbar for ArcGIS:

- An ESRI ArcGIS application, Version 8 or later
- gINT version 5.1.063 or later
- gINT Toolbar for ArcGIS program

Note: If you are using the trial version of gINT, you must use the version dated 16 February 2003 or later. Select **Help ► About gINT** to determine the version of gINT you are running.

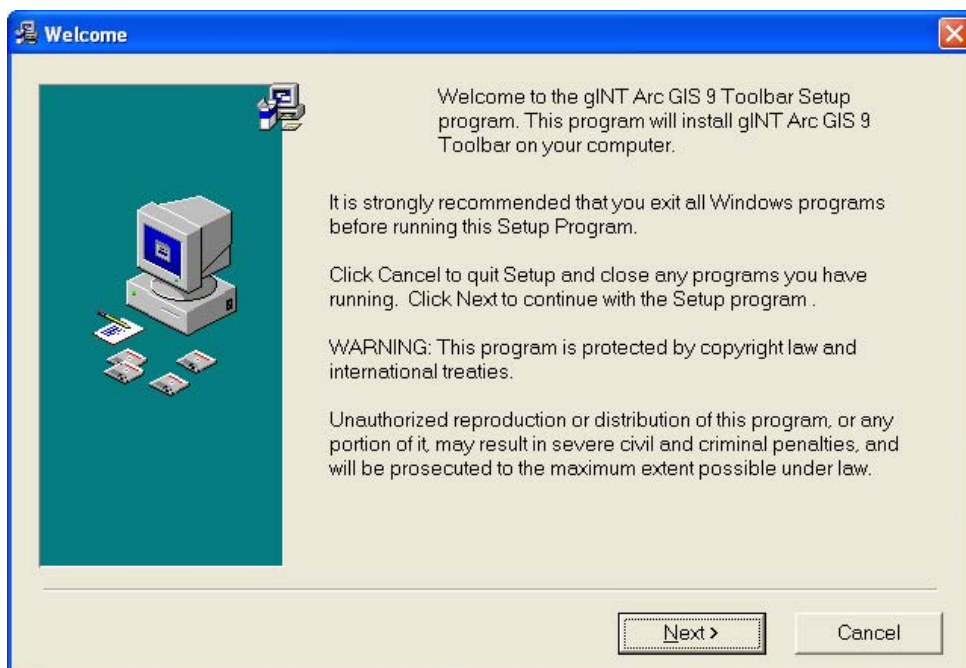
If you purchased the program and are running a version prior to version 5, you can either upgrade to version 5 or download the trial version. If you purchased a build prior to 5.1.063, you can download and install the latest version from the gINT Software Web site at no charge. If you have an older version of the trial, you can download the latest trial version from our Web site at no charge, or request a CD.

Installing the gINT for ArcGIS Toolbar

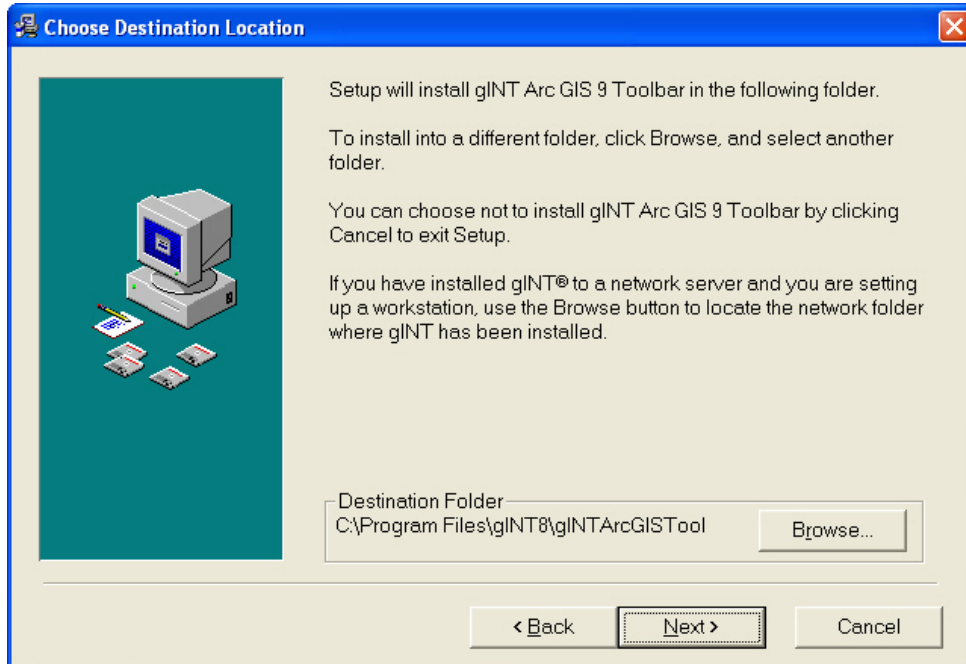
 We strongly recommend that you make a backup copy of the CD before running the installation. The easiest method is to copy the entire contents of the CD to your computer or network. You do not have to run the installation from the CD. Replacement media is \$50.00 per set (plus shipping).

To install the gINT Toolbar for ArcGIS, complete the following steps:

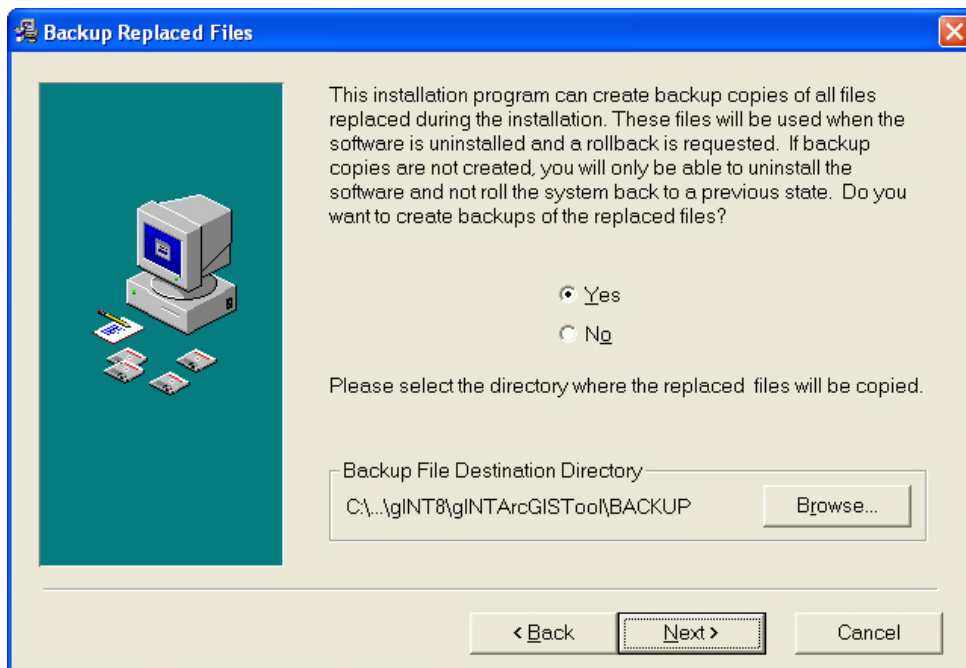
1. Close any open applications. If you are installing from the CD, you can select **Start ► Run**, and type D:\SETUP.EXE (where "D" is the letter of your CD drive) or navigate to the root of the CD, using Windows Explorer, and double-click the SETUP.EXE file. If you copied the contents of the CD to your computer or network, use one of these methods and specify the appropriate folder.
2. When you run the SETUP.EXE file, you see the Welcome dialog box:



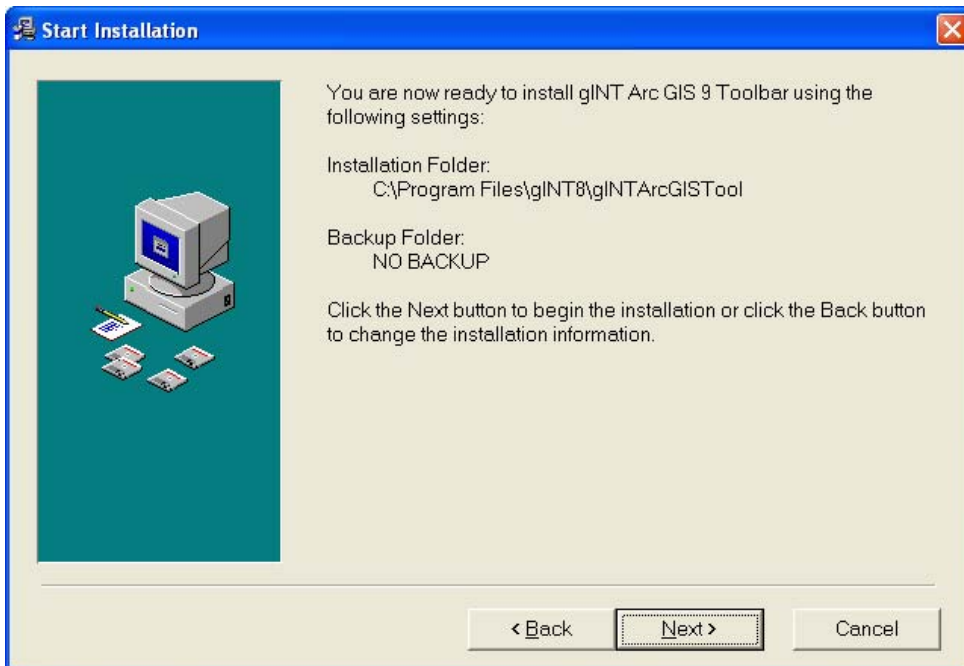
- Click **Next** to continue or **Cancel** to exit the setup program. If you click **Next**, you see the Choose Destination Location dialog box:



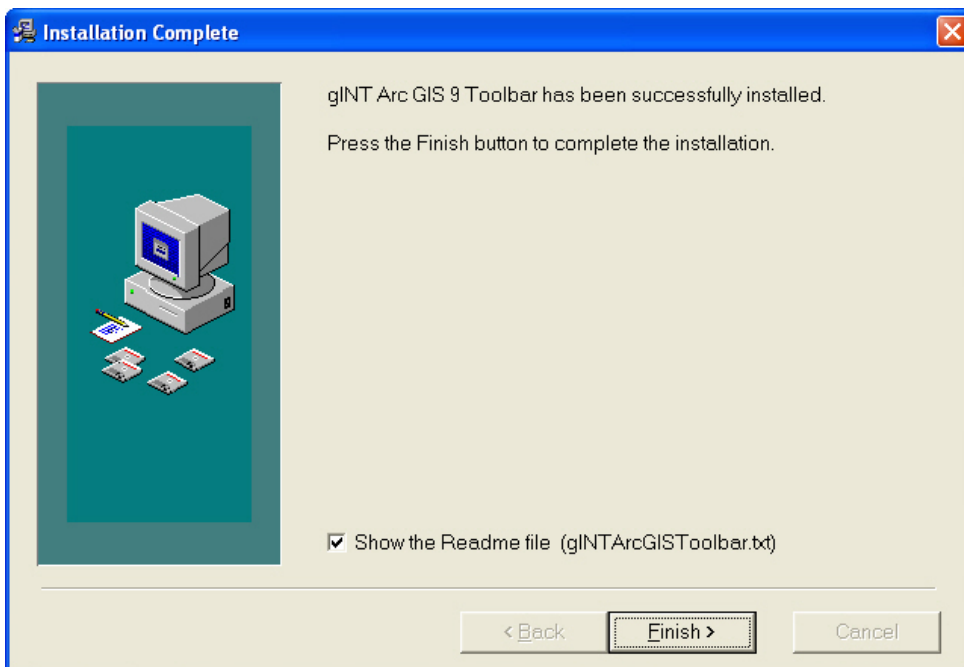
- This screen displays a default target folder for the installed files. Accept the default or select a different folder by clicking the **Browse...** button.
- Click **Next** when you are ready to continue with the installation. You see the Backup Replaced Files dialog box:



- Click **Yes** to create backup copies of the installation files or **No** to install the program without making backup copies. When you click **Next**, you see the Start Installation dialog box:



7. Click Next to install the program. When the installation is finished, you see the Installation Complete dialog box:



8. Click Finish to close the dialog box.

Configuring gINTArcGISTool.ini

If you need to be able to reference a geo database in a location other than the folder where the toolbar is installed, you need to create an INI file that identifies the database's location. This file must be called gINTArcGISTool.ini, must be placed in the toolbar's installation folder, and have the following contents:

```
[gINTArcGISTool]
GeoDBFolder = pathname
```

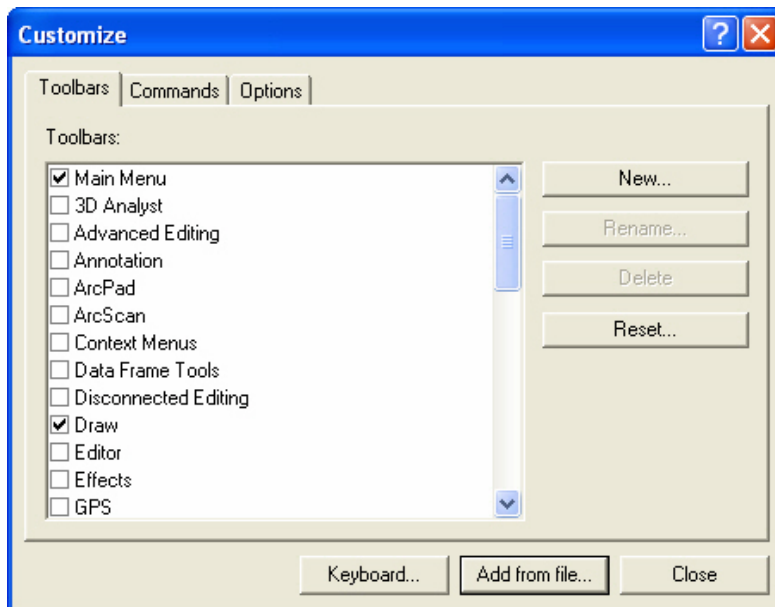
where *pathname* is the fully qualified path to the geo database's folder, and does not include the filename.

Note that adding a gINTArcGISTool.ini file only works in gINT Toolbar For ArcGIS versions 1.1.021 (Sept. 2007) and later. If you need to obtain an updated version, contact gINT Software.

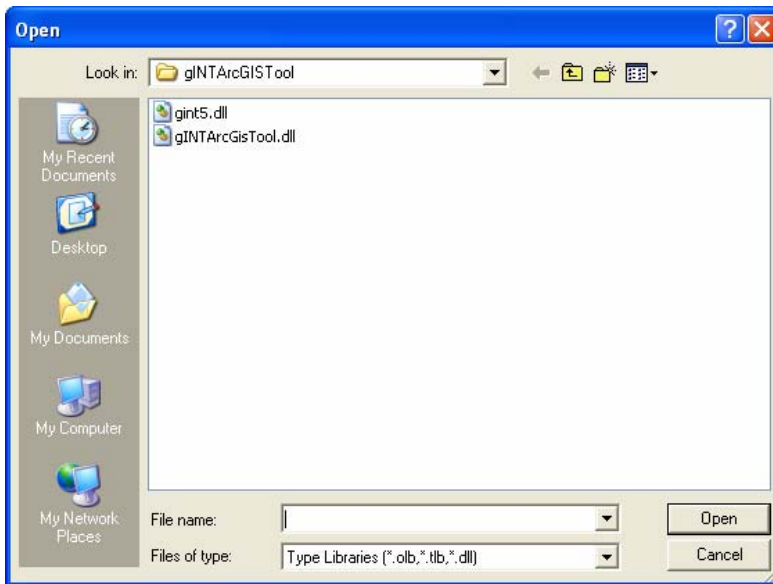
Adding the Toolbar to ArcGIS

Before you can run gINT from your ArcGIS application, you must add the toolbar file (this is a .DLL file) to ArcGIS. To add the toolbar, complete the following steps:

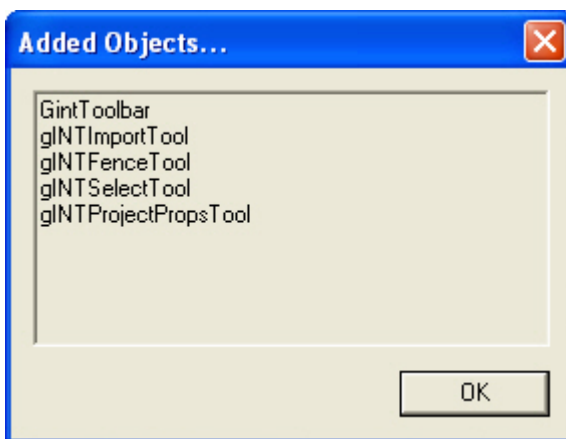
1. Launch the ArcGIS application and select **Tools ► Customize** from the main menu. You see the Customize dialog box:



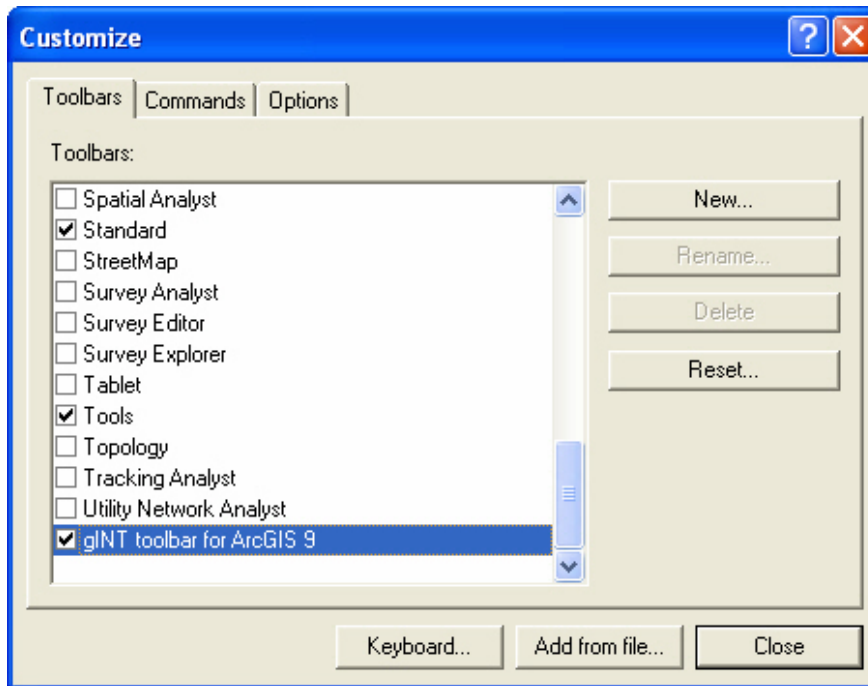
2. From the Toolbars tab, click **Add from file**. You see an Open dialog box. Navigate to the location where the gINT ArcGIS Toolbar program was installed:



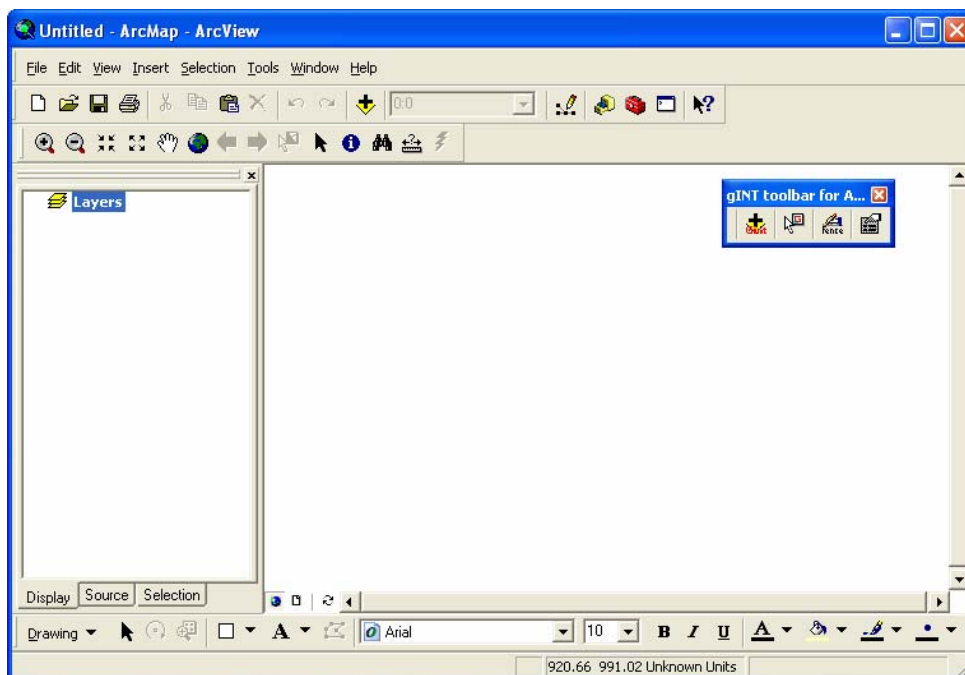
3. Select the "gINTArcGisTool.dll" file and click **Open**. After the toolbar is added, you see the Added Objects dialog box:



- Click **OK** to close the dialog box. The Toolbars tab now displays the gINT toolbar for ArcGIS (version #) under the list of **Toolbars**.



- Place a check in the checkbox next to the "gINT Toolbar for ArcGIS" item. When checked, the toolbar is displayed inside your ArcGIS application. Click **Close** when you finished.
- Your ArcGIS application main screen should now look similar to the following:



In the screen shot shown above, the gINT ArcGIS Toolbar is floating in the main workspace of the ArcGIS application. You can also dock the toolbar.

If You Installed the Trial Version

If you are installing the trial version of the toolbar, you cannot modify the location where the files are installed. The files are always installed to the \<gINT version number>Trial\GIS Tools folder. For example, if you were installing the toolbar for the trial version of gINT 5, the path would read: C:\gINT 5 Trial\GIS Tools\. With a fully registered version of gINT, you can install the files to the folder of your choice.

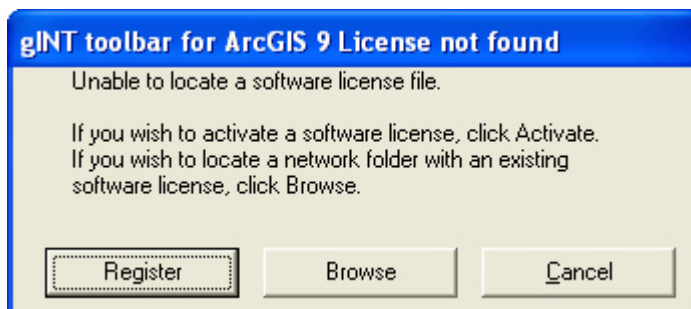
For trial versions, you can bypass the [Licensing](#) section that follows. There is no license registration process with the trial version. The trial version give you access to the program for four hours of use, or twenty (20) sessions, over any given period of time. The usage time in a session does not start until you click on one of the toolbar buttons, so if you have an ArcGIS session where the toolbar is not clicked on, no time is deducted.

The trial version also comes with a sample ArcGIS project and associated gINT project file. Use the **File ► Open** command in ArcGIS, browse to \<gINT version number>Trial\GIS Tools\Samples, and open the gINTSoftware.mxd file. You can also open your own ArcGIS models and other gINT projects.

Licensing the gINT Toolbar for ArcGIS

Please complete the following steps to register your gINT for ArcGIS Toolbar:

1. The first time you click one of the buttons on the gINT Toolbar for ArcGIS on a standalone machine or network workstation, you see the gINT Toolbar for ArcGIS License Not Found dialog box:



2. If you previously registered the software license to your network on another workstation, select the **Browse** option and point to the location of the license file. Otherwise, select the **Register** option. You see the Please Select a License Type dialog box:



Click

Standalone to install the licensing files to the gINT Toolbar installation folder located under your gINT installation directory.

Network to launch a browser dialog box that allows you to select the path to a shared folder on the network server. This folder will contain the license files and must have read/write privileges for all operators that will be using the gINT Toolbar. You can use an existing gINT network license folder, or the folder of your choice.

Cancel to close the dialog box and return to the previous screen.

3. If you select **Standalone** or **Network**, you see the Unlock Application dialog box:

4. Call, fax or e-mail gINT Software with the **Code Entry Number** and **Computer ID Number** displayed on your screen (not the codes shown in this screen shot). You will receive an Activation Code (in the case of a networked license you will receive two codes).
5. When you enter the Activation Code(s) and click **Activate**, the gINT Toolbar is activated and operational.

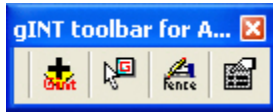
Licensing Additional Network Workstations

If you selected the **Network** option in the procedure described above, after installing the license files to your network from any workstation, you can register additional workstations by pointing each workstation's configuration to the location of the network files. When you start the program, you see the same screen that appears during the initial installation:

Select **Browse** and point the program to the network folder containing the licensing files. You can repeat this process on as many workstations as desired. However, you can only open the gINT Toolbar simultaneously on the number of workstations for which you are licensed.

Using gINT for ArcGIS

The gINT for ArcGIS toolbar is composed of four buttons. If you “float” the toolbar in your workspace area, it has the following appearance:



If you “dock” it in a fixed position, it looks like this:



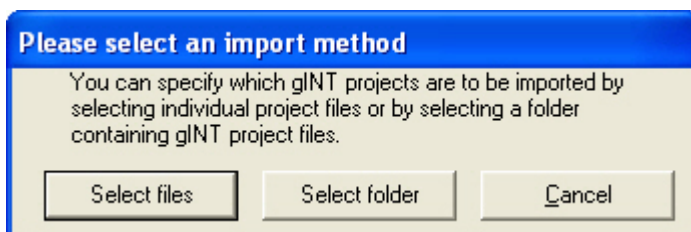
The toolbar can be docked by clicking in the caption (top) line of the floating toolbar and dragging it to any location in the ArcGIS header area. All gINT/ArcGIS functionality is obtained through the use of these buttons. Most of the processes implemented by the buttons are performed by gINT.

Clicking on any button for the first time in an ArcGIS session launches gINT, which then resides in your system tray. Before you can run another session of gINT, you must first close the session that was launched by clicking on the gINT toolbar for ArcGIS.

The following sections describe the functionality of each toolbar button:

The gINT Project Import Tool

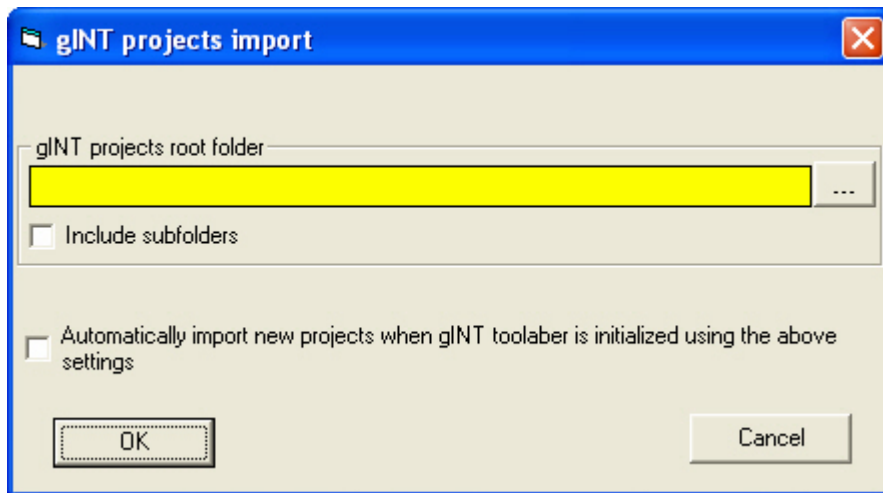
Clicking the Project Import Tool button  launches the Please Select an Import Method dialog box:




Choose from the following options:

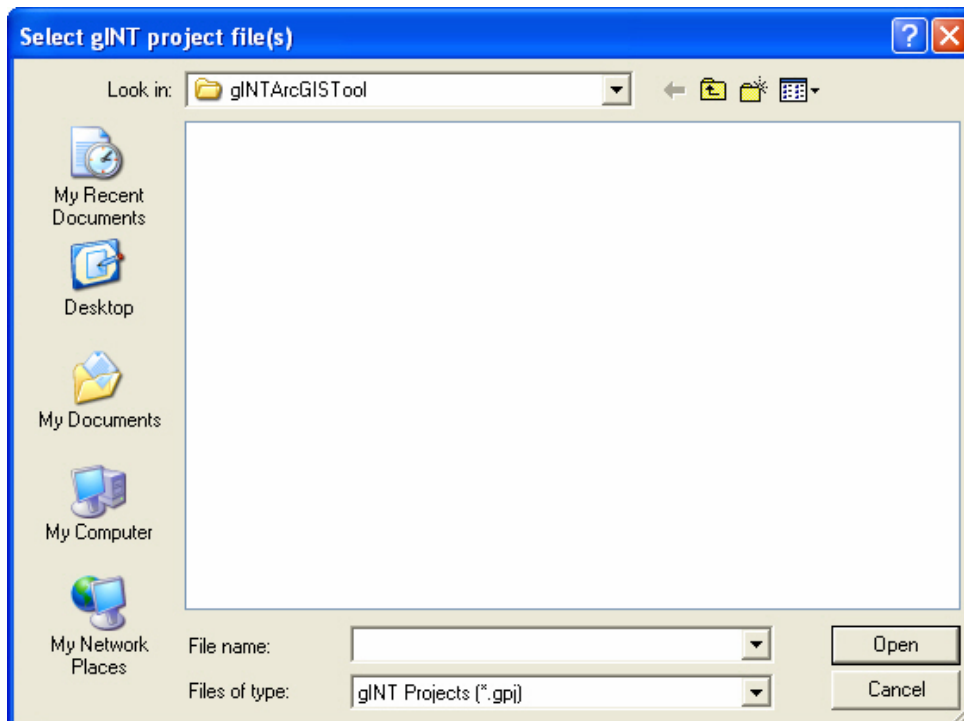
- Select Files to select one specific gINT project file (*.GPJ) for import into the ArcGIS model.
- Select Folder to select a folder containing your gINT project files.
- Cancel to return to the ArcGIS application’s main screen.

If you click **Select Folder** you see the gINT Projects Import dialog box:



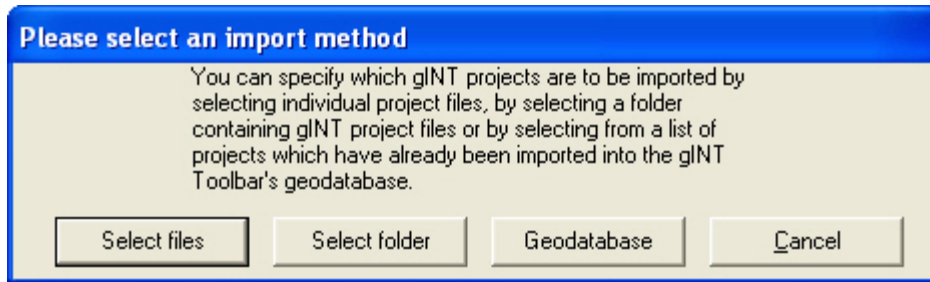
Use the browse  button to navigate to the folder location of your gINT project files. Check the **Include Subfolders** option to include any subfolders. If you check the **Automatically import new...settings** option, the program will automatically open any new projects in the selected folder.

Click **OK** when you are finished or **Cancel** to close the dialog box. If you click **Select Files** you see the Select gINT Project File(s) dialog box:

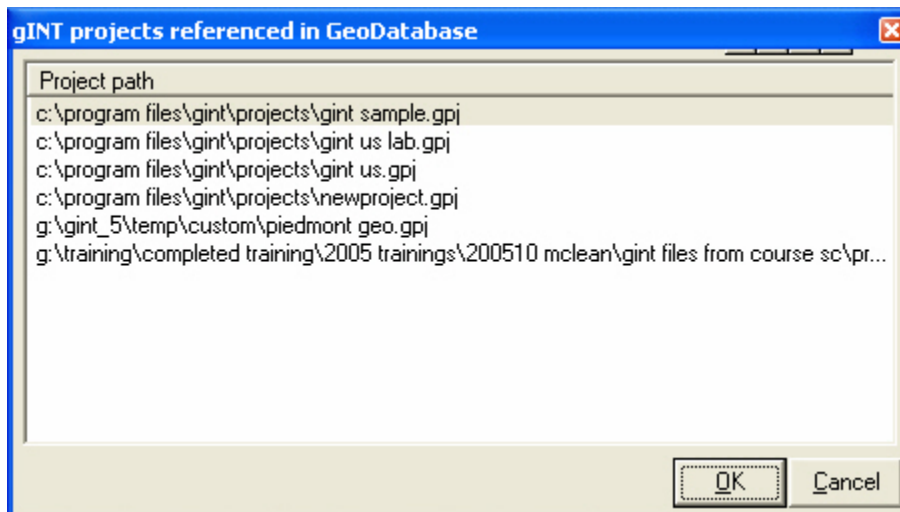


Navigate to the appropriate folder, select the desired file and click **Open**.

If you have previously opened a gINT project file in your ArcGIS application, when you click the Data Import Tool, you see the following dialog box:



The Geodatabase option allows you to select from a list of previously imported (or selected) gINT project files.

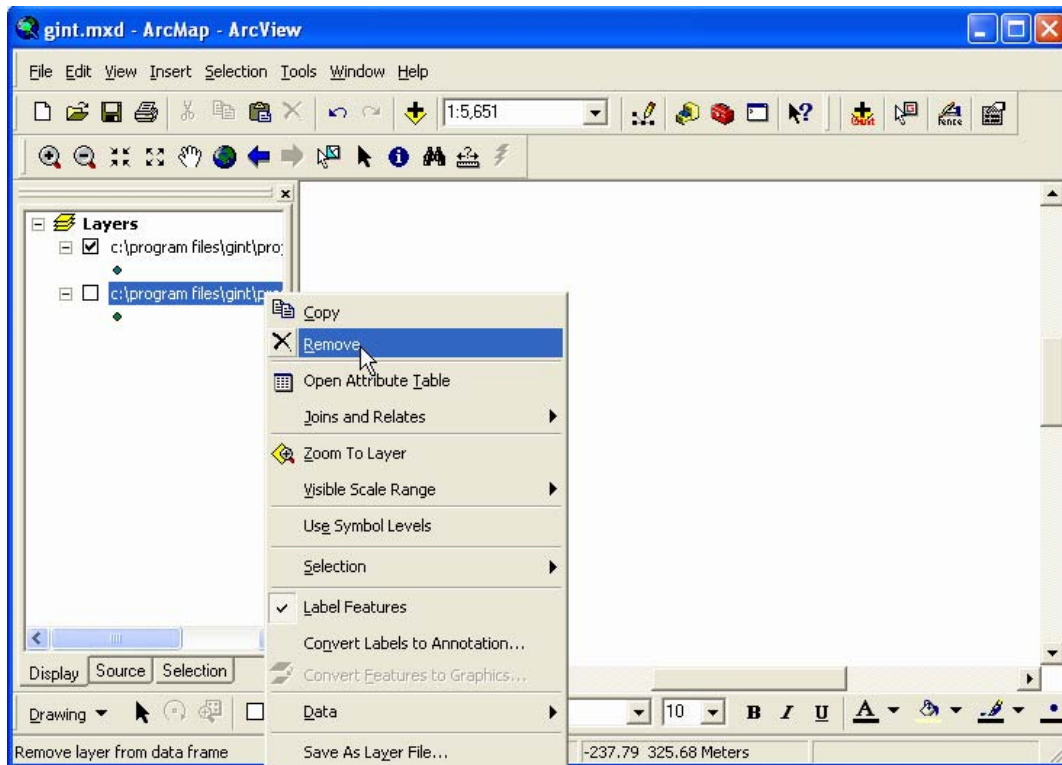


Highlight the desired project and click OK. When you select a project, the tool imports the table with the coordinate information (see the [Selection Tool](#) section of this document) into an ArcGIS geodatabase file. This file is called gINTGeoDB.mdb and is placed in the same folder as the toolbar .DLL file.

Each project is displayed as a layer in the ArcGIS model, titled with the full path and file name, a slash, and the name of the table containing the coordinate information.

Example: g:\gint\projects\my project.gpj/POINT

You can remove projects by right-clicking on a layer name in the layer panel and selecting Remove:




You could import the same information through standard ArcGIS tools, but if you did, the gINT toolbar would have no knowledge of the data.

The gINT project files are not opened throughout a session. They are opened only at import time, at ArcGIS startup to read the coordinate information, and during the refresh operation (see the [Properties Tool](#) section of this document). In addition, the original project files are accessed during operations invoked by the [Selection Tool](#).

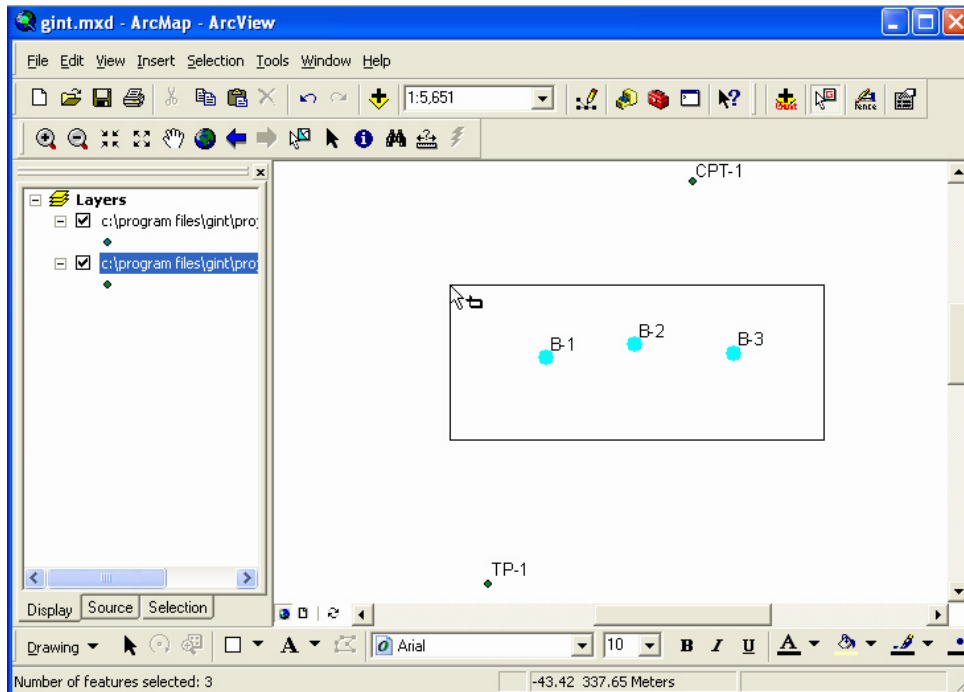
The details of displaying the boreholes from the gINT projects in the ArcGIS model, marker look and size, labeling, and so on, are defined by the ArcGIS tools. See your ArcGIS documentation for information on using the ArcGIS tools.

The Selection Tool

The Selection Tool button  is the main tool on the gINT for ArcGIS toolbar. The Selection Tool has the following functionality:

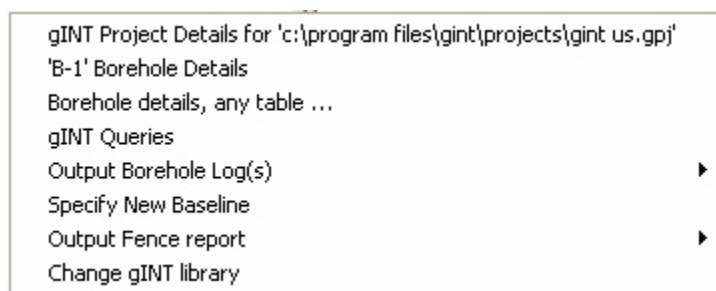
Left-Click Functionality

Left-click on the map, then drag and release the mouse to select/deselect any boreholes within the selection rectangle.



Right-Click Functionality

Right-click on a borehole to display the following menu options:



- **gINT Project Details for 'name and file path of gINT project associated with the selected borehole.'**: Displays the data from the PROJECT table for the gINT project file associated with the selected borehole. See the [Data Display](#) topic for additional information.

Client	ABC Corporation
Name	gINT Example
Number	ABC-12345
Location	Somewhere, USA
Elevation Datum	MSL
Depth Log Page (ft)	

Close Print Export Help

- '<borehole name>' Borehole Details: Displays the data from the POINT table for the selected borehole. See the [Data Display](#) topic for additional information.

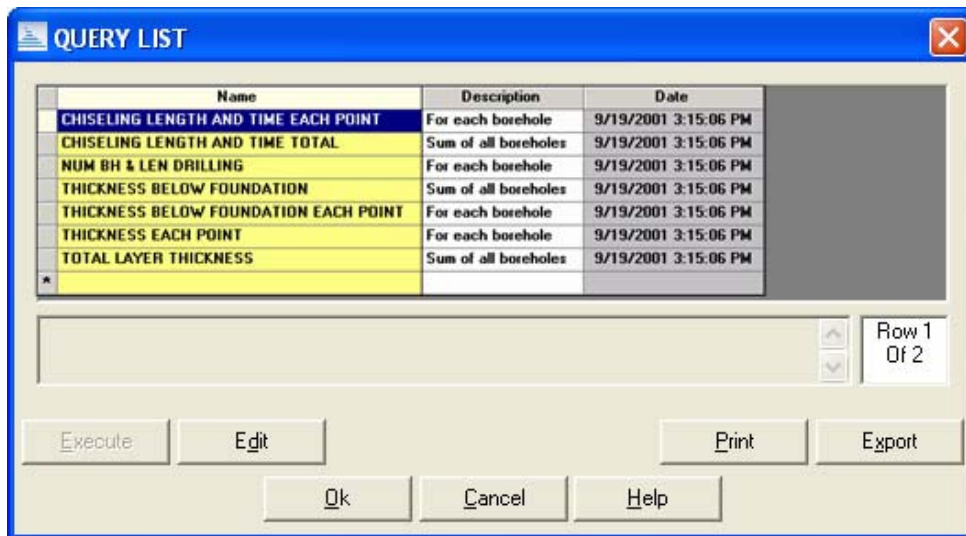
Borehole ID	B-1
Total Depth (ft)	45
Date Started	11/21/2002
Date Completed	11/22/2002
Surface Elevation (ft)	123.4
Hole Size	6" to 25", NX to BOH
Any File	
Contractor	AAAAA Drilling, Inc.
Method	Hollow Stem Auger
Logged By	A. Bore
Checked By	Y. Me
Notes	Weather: Warm, sunny, slight
Water Depth During (ft)	17.5
Water Depth At End (ft)	16
Water Depth After (ft)	15.5
Hours After	48
Depth Log Page (ft)	
North (ft)	255
East (ft)	65
Plunae Ideal	

Close Print Export Help

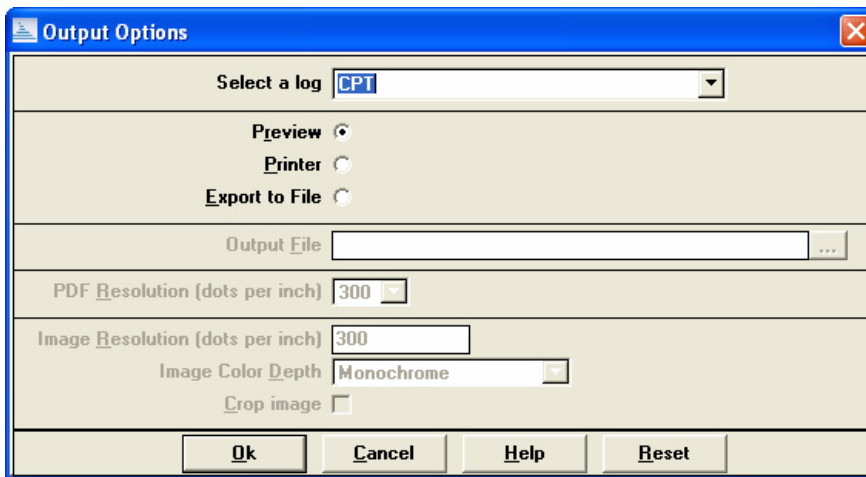
- **Borehole details, any table...:** Displays a list of all the tables in the gINT project file. If you select a table, the data for the currently selected borehole is displayed. See the [Data Display](#) topic for additional information.



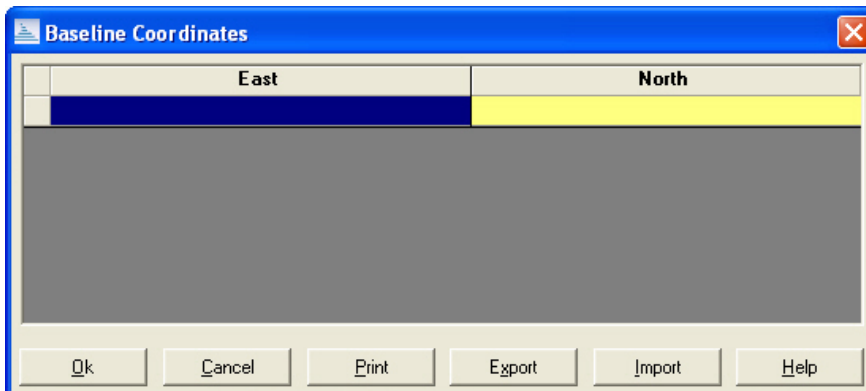
- **gINT Queries:** Displays the gINT Query list dialog box where SQL queries can be created, modified, and run. See the [gINT Queries](#) topic for additional information.



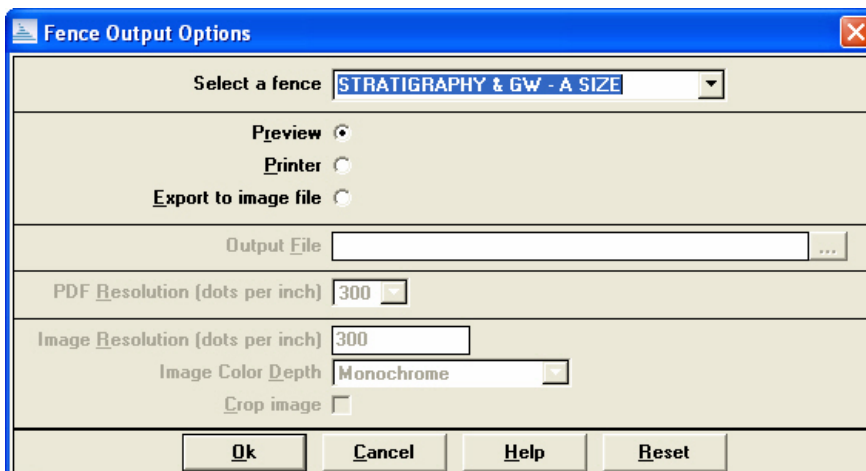
- **Output Borehole Log(s)...:** This opens a submenu with options to output the currently selected borehole or all selected boreholes. If no boreholes are selected, a second choice is not displayed. See the [Report Output](#) topic for additional information.



- **Specify New Baseline:** Displays a dialog box for specifying the East and North coordinates for a fence baseline. See the [Fence Tool](#) topic for additional information.

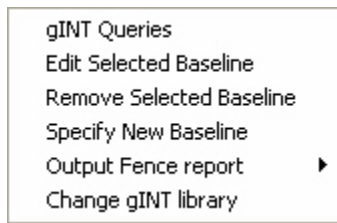



- **Output Fence Report:** This opens a submenu with options to output selected boreholes or all boreholes. A best fit baseline through the boreholes is used to generate the fence. See the [Fence Tool](#) topic for additional information.



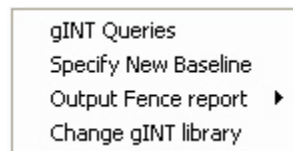
- **Change gINT Library:** Displays a dialog box for selecting a different gINT library file.

Right-clicking on a fence baseline displays the following menu options:




- **gINT Queries:** Displays the gINT Query list dialog box where SQL queries can be created, modified, and run. See the [gINT Queries](#) topic for additional information.
- **Edit Selected Baseline:** Displays a dialog box for editing the East and North coordinates for a fence baseline. See the [Fence Tool](#) topic for additional information.
- **Remove Selected Baseline:** Deletes the currently selected baseline. You can also delete a baseline using the ArcGIS Select Elements  tool by selecting a baseline, right-clicking it, and selecting Delete from the menu displayed.
- **Specify New Baseline:** Displays a dialog box for specifying the East and North coordinates for a fence baseline. See the [Fence Tool](#) topic for additional information.
- **Output Fence Report:** This opens a submenu with options to output selected boreholes or all boreholes. The currently selected baseline is used to generate the fence. See the [Fence Tool](#) topic for additional information.


Right-clicking on an area that is not a borehole or fence baseline displays the following menu options:




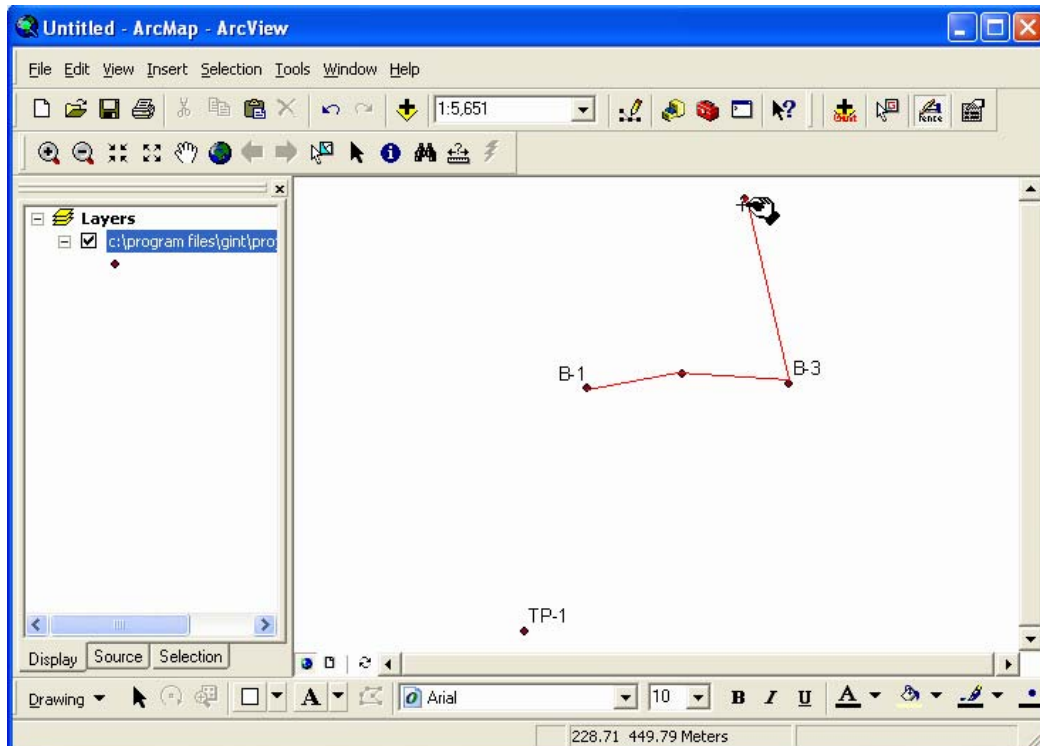
- **gINT Queries:** Displays the gINT Query list dialog box where SQL queries can be created, modified, and run. See the [gINT Queries](#) topic for additional information.
- **Specify New Baseline:** Displays a dialog box for specifying the East and North coordinates for a fence baseline. See the [Fence Tool](#) topic for additional information.
- **Output Fence Report:** This opens a submenu with options to output selected boreholes or all boreholes. A best fit baseline is used to generate the fence. See the [Fence Tool](#) topic for additional information.



The Fence Tool

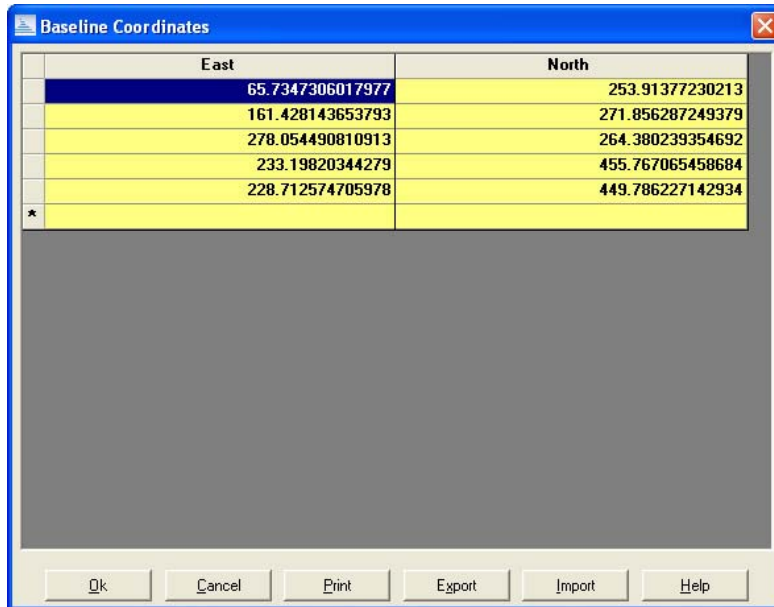
The Fence Tool  button allows you to draw a baseline onto your map. Fence diagrams in gINT generate a report with multiple boreholes that have the specified data posted to each location. The borehole fence “posts” are located at the proper horizontal spacing relative to each other along a baseline. You can draw as many baselines as you wish.

Select the baseline to use for a particular fence diagram using the Selection Tool  button and right-clicking on the desired baseline. When you are finished selecting, click the **Output Fence Report** menu option to print/preview the report.

To draw a baseline, click the Fence Tool  button and then click at each vertex location. Double-click on the last vertex to complete the baseline.



To edit a baseline, you can use the Select Elements tool  in ArcGIS. For more control and precision, click the gINT Selection Tool  button and right-click on the desired baseline. From the context menu that displays, select **Edit Selected Baseline**. You see the Baseline Coordinates dialog box:




You can edit coordinate values, delete vertices, and insert new ones. To delete or insert rows, right-click in the gray column to the left of the row to highlight it, and then right-click in the selected row.

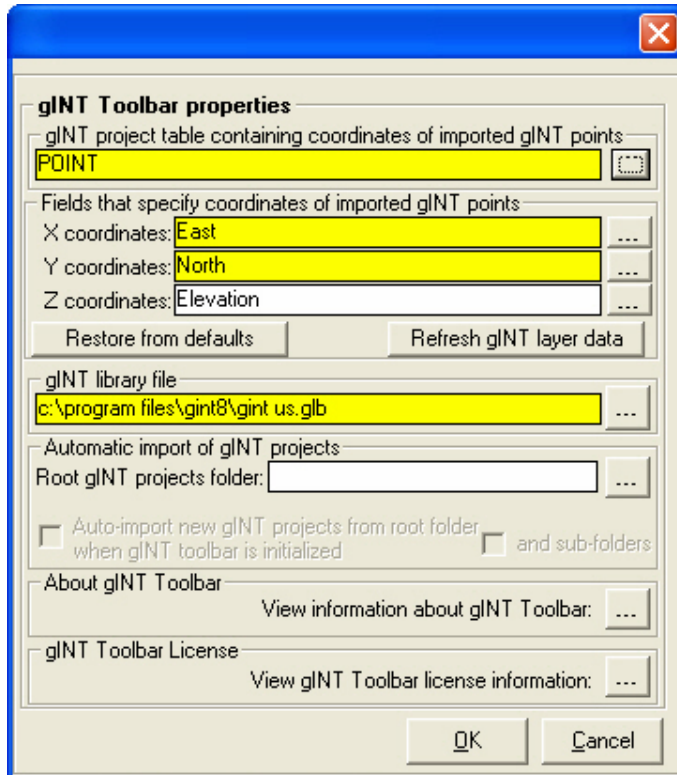
A context menu displays, from which you can select **Delete** or **Insert**. In the Baseline Coordinates dialog box you can also:

- Print the grid
- Export the data to a CSV (comma separated values) or XLS (Microsoft Excel) file
- Import a baseline. When importing, the source file must be in CSV format in the form, such as:
East,North


Instead of using the Fence Tool to draw a baseline, you can specify one by typing the coordinates into the Baseline Coordinates dialog box.

The Properties Tool

When you click on the Properties Tool  button, you see the gINT Toolbar Properties dialog box:



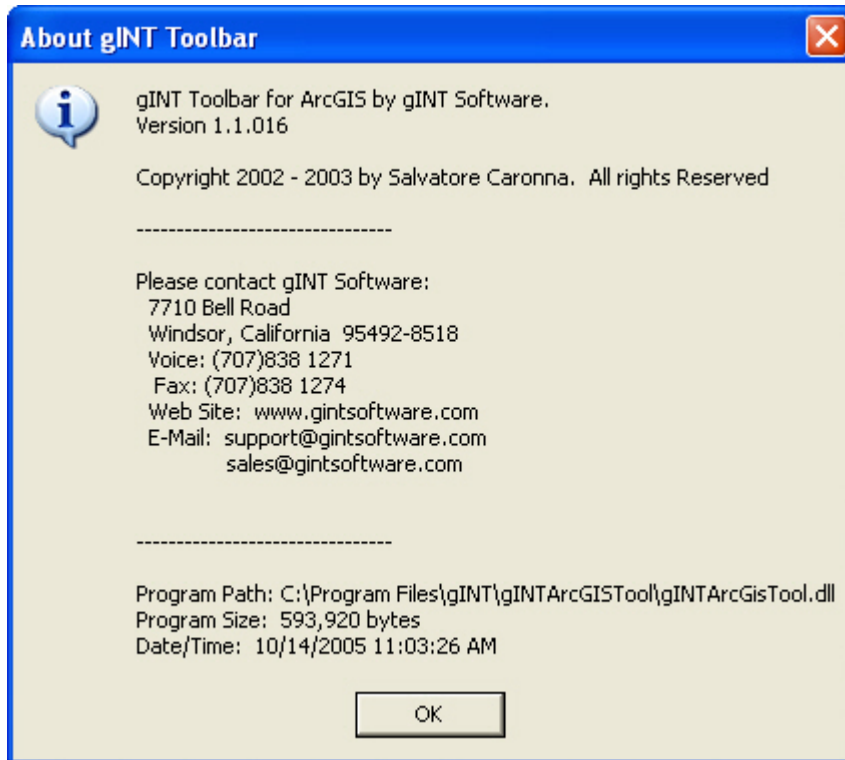
The upper portion of the dialog box establishes the table and fields from which the toolbar obtains the coordinate data. The default values are shown in the screen shot above. The POINT table and the East, North, and Elevation fields appear in all gINT project databases. You can change these values to the fields of your choice.

If the fields you enter are in a table other than the POINT table, click the browse  button to the right of the table field and select a table. Only tables at the POINT (borehole) level are displayed. You can also use the browse buttons next to the X, Y, and Z Coordinates fields to change their values.

Please be aware that only the X and Y data are used in ArcGIS. The Z data are needed by gINT if you are outputting a fence diagram whose vertical axis is elevation instead of depth. The **Restore from defaults** option refreshes the screen with the default settings (shown above).

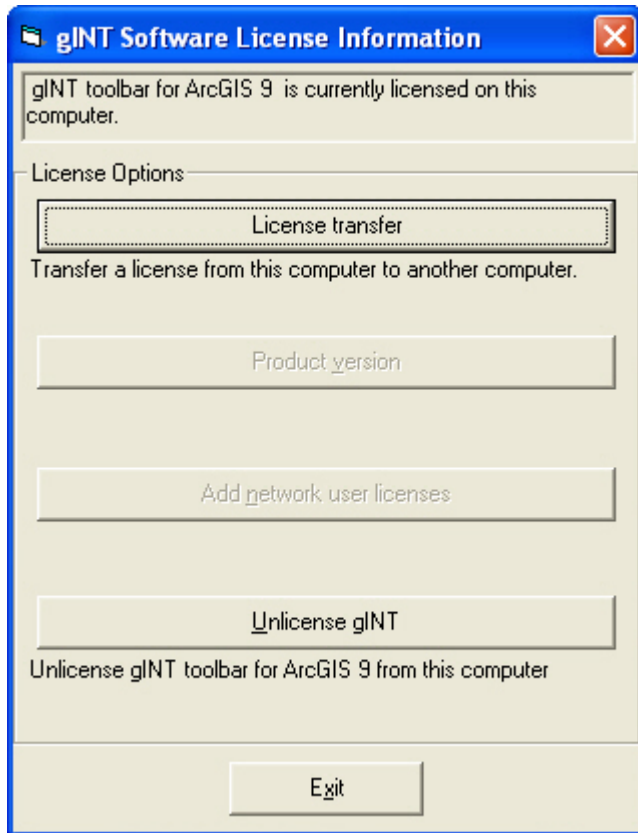
You can click the **Refresh gINT layer data** option to re-import the coordinate data into the geodatabase. Data is automatically re-imported when an ArcGIS model is opened, so it is only necessary to use this option if you believe data have changed during a session.

If you click the launch  button in the **About gINT Toolbar** section, you see the About gINT Toolbar dialog box:



This screen displays information about the toolbar version, along with gINT Software contact information. Click **OK** to close the dialog box.


Clicking the launch  button in the **gINT Toolbar License** section displays the gINT Software License Information dialog box:

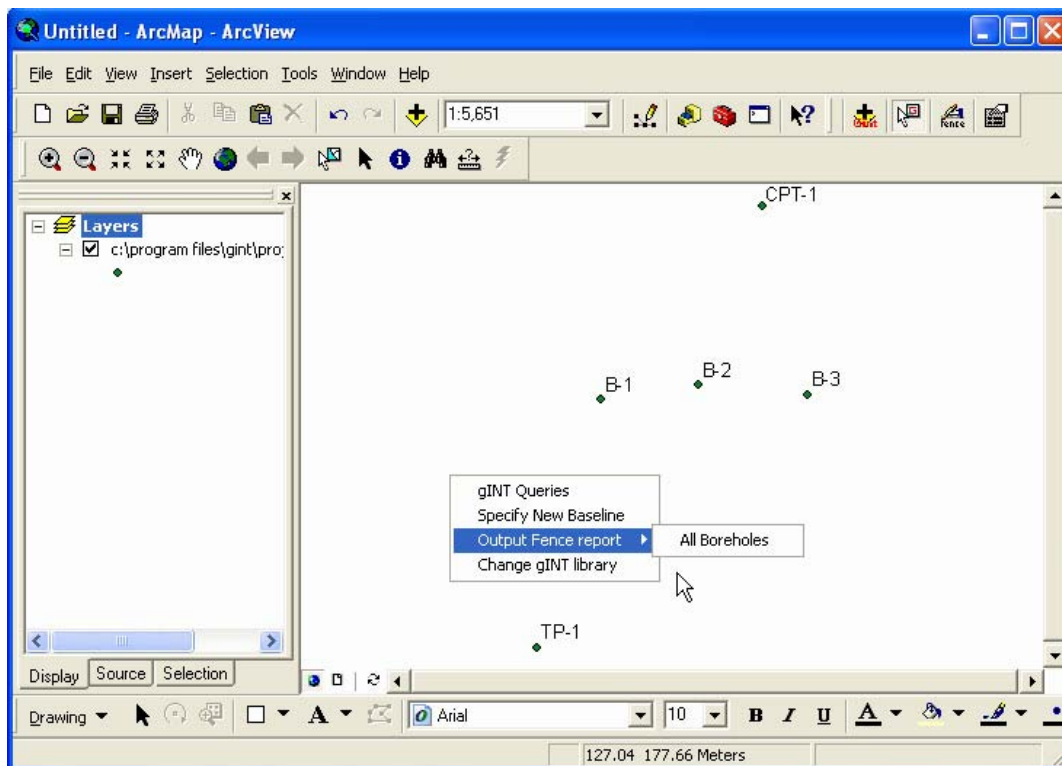


This screen displays your gINT license details and provides additional licensing options.

Report Output

The toolbar supports two gINT report styles: logs and fences. However, if you have gINT Logs or logWRITER+, fences are not available through the toolbar because these versions of gINT do not support fences. Only gINT Professional and gINT Script Edition support fence reports.

Both types of reports are output using the Selection Tool  and then right-clicking to display a context menu.

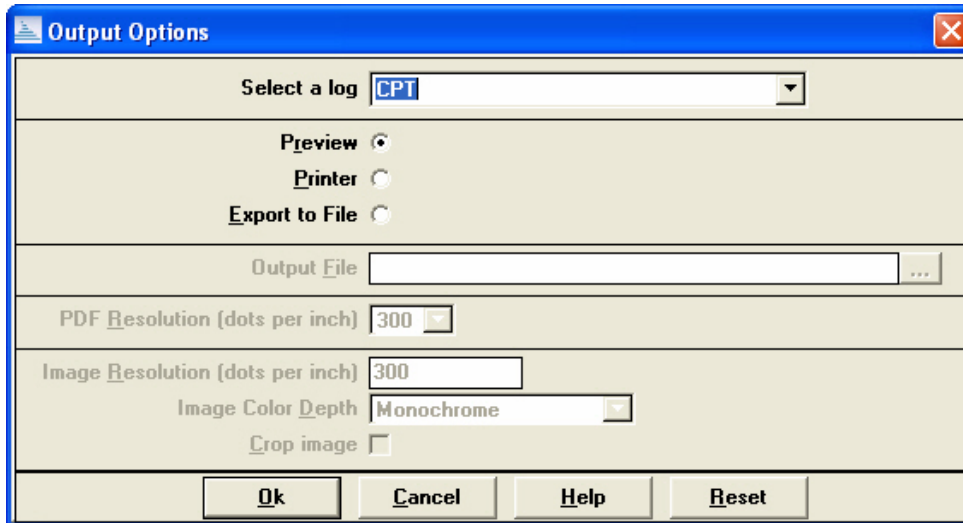


Right-clicking on a borehole gives you the option to output either report type (logs or fences). Right-clicking on a fence baseline or an area of the model with no borehole or baseline, displays the output option for fences only.

If boreholes are selected, with logs, you have the option to output selected boreholes or the current borehole. With fences, you have the option to output the selected boreholes or all boreholes. If no boreholes are selected, your choices are only the current borehole (for logs) or all boreholes (for fences).

Whether or not boreholes are selected, if a baseline is used with a fence output, only those boreholes that project perpendicular to the baseline are used.

When you select the **Output Borehole Log(s)** from the context menu, you see the Output Options dialog box:



The **Select a log** field is a drop-down list that displays all the log forms in the current gINT library. The **Preview**, **Printer**, and **Export to File** options allow you to select your method of output.


You can send your report either to the screen (**Preview**), a printer, or export it to an image file. gINT supports BMP, JPG, PCX, PPM, and TGA file formats. If the **Export** option is selected, the last four fields are enabled.

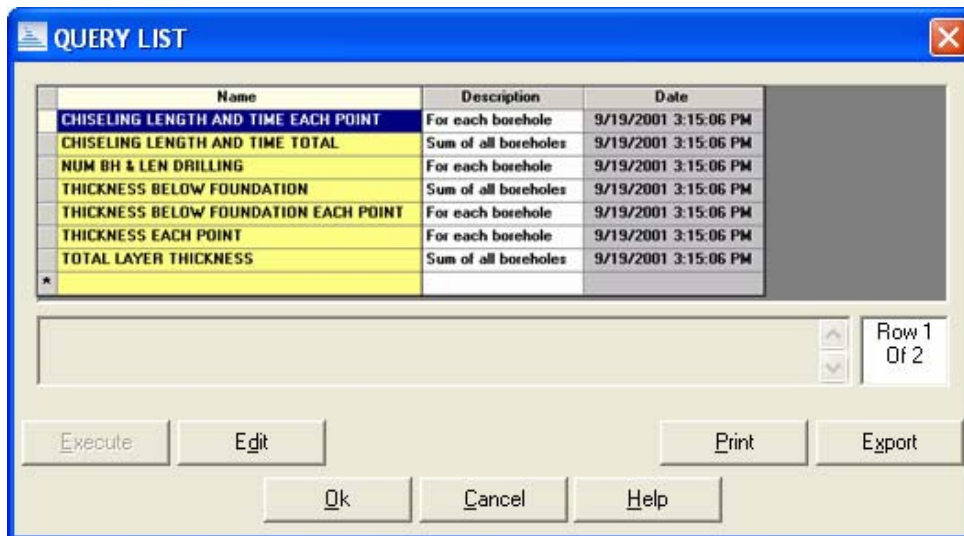
 **Note:** You can print the report from the preview window.

The Output Options dialog box for fences is the same as for logs except that the first field is labeled **Select a Fence** and displays the fence report forms defined in your gINT library.

gINT Queries


You can view data from your gINT projects using queries (SQL (Structured Query Language) expressions). Queries can be stored in your gINT library and run through the toolbar. For example, you might want to run a query for a table containing the borehole name, coordinates, surface elevation, and depth to bedrock of all boreholes in all projects.

The query function is invoked using the Selection Tool  and right-clicking anywhere in the ArcGIS model to display the context menu. When you select gINT Queries from the menu options, you see the Query List dialog box:

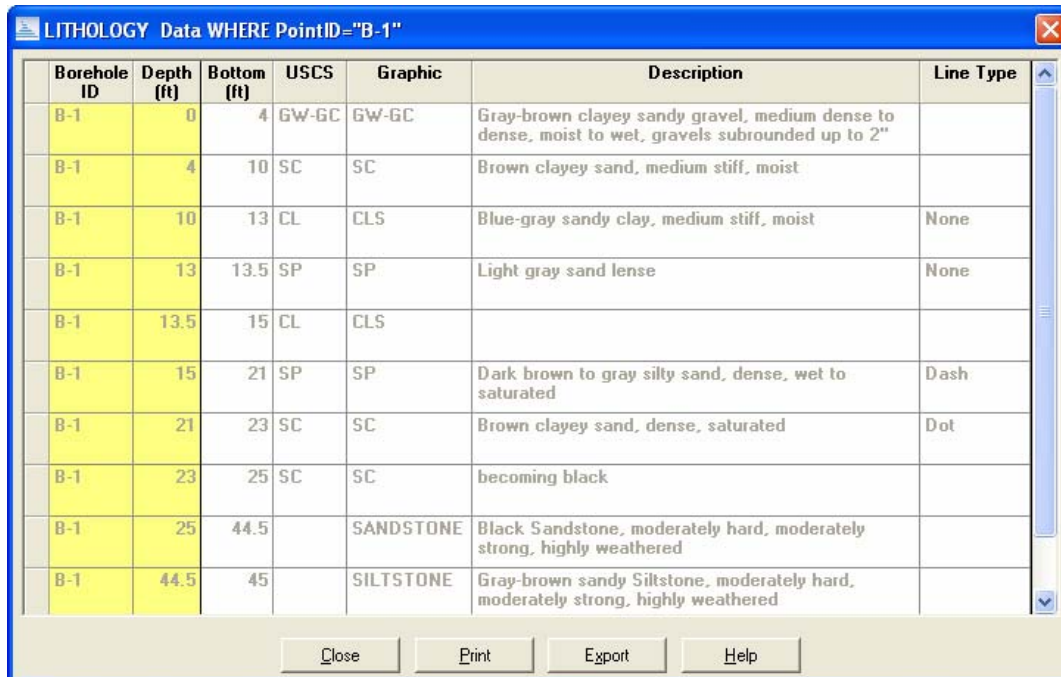


This is the same functionality that exists in the INPUT application in gINT, but pertains to all the projects within the ArcGIS model, not just the currently opened project in INPUT. For more information on Queries, in gINT select **Help ► Search for Help On...** and enter "Queries" in the search text box.

Data Display

Data can be displayed by invoking the Selection Tool , right-clicking on a borehole, and choosing either the **Borehole Details**, **any table** option, or **Borehole details** for the currently selected borehole (such as B-1).

If you select **Borehole Details**, **any table**, you can display data for that borehole from any table in the gINT project database associated with the borehole. Running a query (see the [gINT Queries](#) section) also generates a data display. The following screen shot displays data from the Lithology table associated with the borehole:




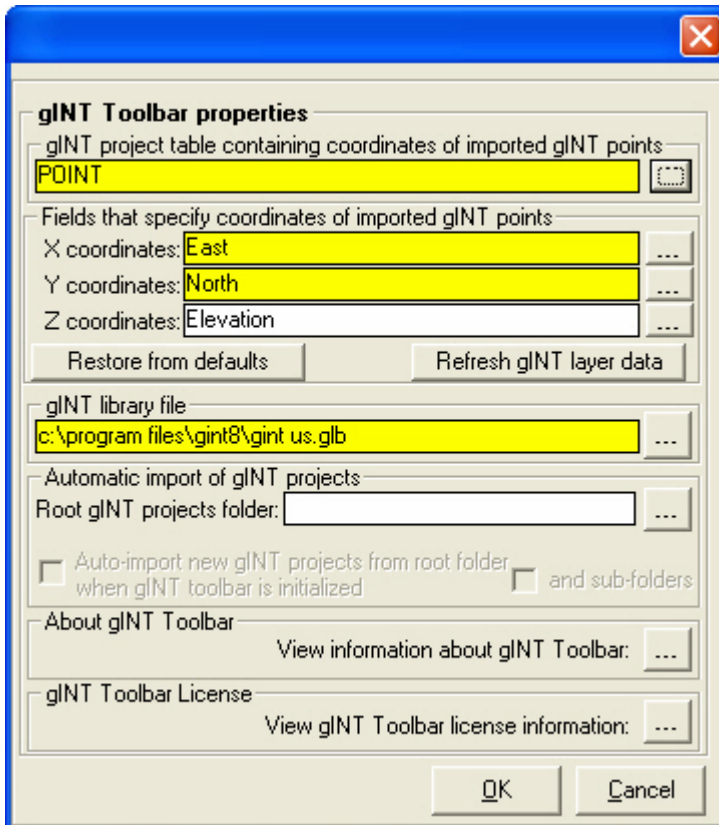
Borehole ID	Depth (ft)	Bottom (ft)	USCS	Graphic	Description	Line Type
B-1	0	4	GW-GC	GW-GC	Gray-brown clayey sandy gravel, medium dense to dense, moist to wet, gravels subrounded up to 2"	
B-1	4	10	SC	SC	Brown clayey sand, medium stiff, moist	
B-1	10	13	CL	CLS	Blue-gray sandy clay, medium stiff, moist	None
B-1	13	13.5	SP	SP	Light gray sand lense	None
B-1	13.5	15	CL	CLS		
B-1	15	21	SP	SP	Dark brown to gray silty sand, dense, wet to saturated	Dash
B-1	21	23	SC	SC	Brown clayey sand, dense, saturated	Dot
B-1	23	25	SC	SC	becoming black	
B-1	25	44.5		SANDSTONE	Black Sandstone, moderately hard, moderately strong, highly weathered	
B-1	44.5	45		SILTSTONE	Gray-brown sandy Siltstone, moderately hard, moderately strong, highly weathered	


You cannot edit the data, but you can print or export it to a .CSV or .XLS (requires Microsoft Excel) file format. You can also left-click on any column heading and sort the rows in ascending order by the data in the column. If the column is already sorted in ascending order, the rows are resorted in descending order.

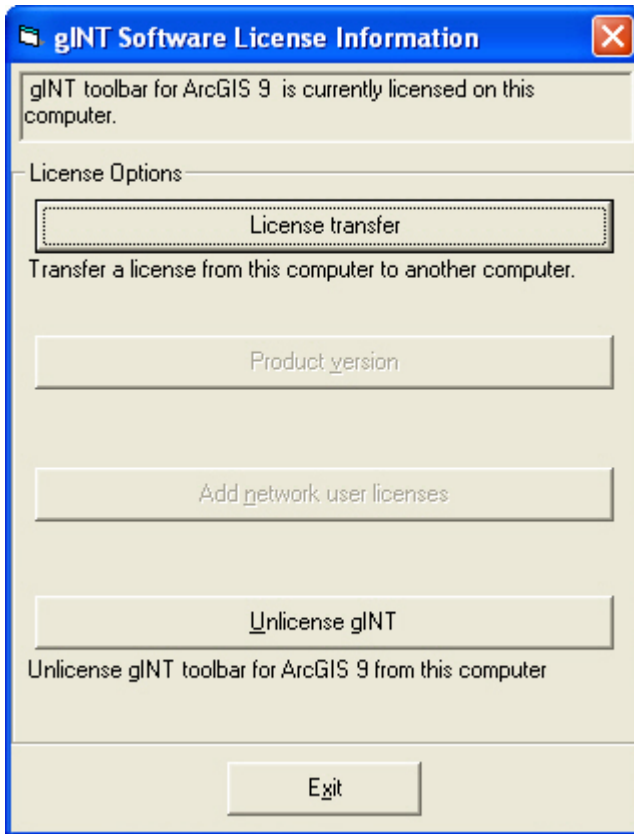
Unlicensing gINT for ArcGIS

To unlicense the gINT Toolbar for ArcGIS, complete the following steps:

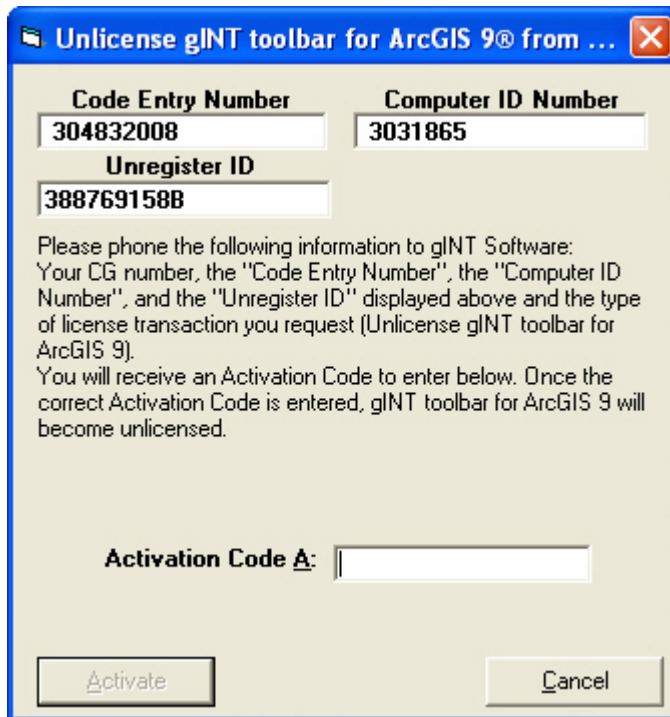
1. Click the Properties  toolbar button to display the gINT Toolbar Properties dialog box:



2. Click the View gINT Toolbar license information browse  button. You see the gINT Software License Information dialog box:



- To unlicense the product, click **Unlicense gINT**. You see the Unlicense gINT Toolbar for ArcGIS dialog box:



The dialog box titled "Unlicense gINT toolbar for ArcGIS 9® from ..." contains the following information:

Code Entry Number	Computer ID Number
304832008	3031865

Unregister ID
388769158B

Please phone the following information to gINT Software:
Your CG number, the "Code Entry Number", the "Computer ID Number", and the "Unregister ID" displayed above and the type of license transaction you request (Unlicense gINT toolbar for ArcGIS 9).
You will receive an Activation Code to enter below. Once the correct Activation Code is entered, gINT toolbar for ArcGIS 9 will become unlicensed.

Activation Code A:

- Call, fax or e-mail gINT Software with the **Code Entry Number** and **Computer ID Number** displayed on your screen (not the codes shown in this screen shot). You will receive an Activation Code (in the case of a networked license you will receive two codes).
- Enter the code(s) and click **Activate** to unlicense your gINT Toolbar for ArcGIS. If you have any problems unlicensing the product, please contact gINT Software Technical Support.

For Further Assistance

For further information on using gINT, please refer to the appropriate documentation or applicable Help topic. The Help system in gINT is extensive, and can be accessed from anywhere in the program by selecting the **Help ► Contents** menu option.

For assistance on using an ArcGIS application, please refer to the appropriate ESRI documentation or visit their Web site at www.esri.com/software/arcgis.