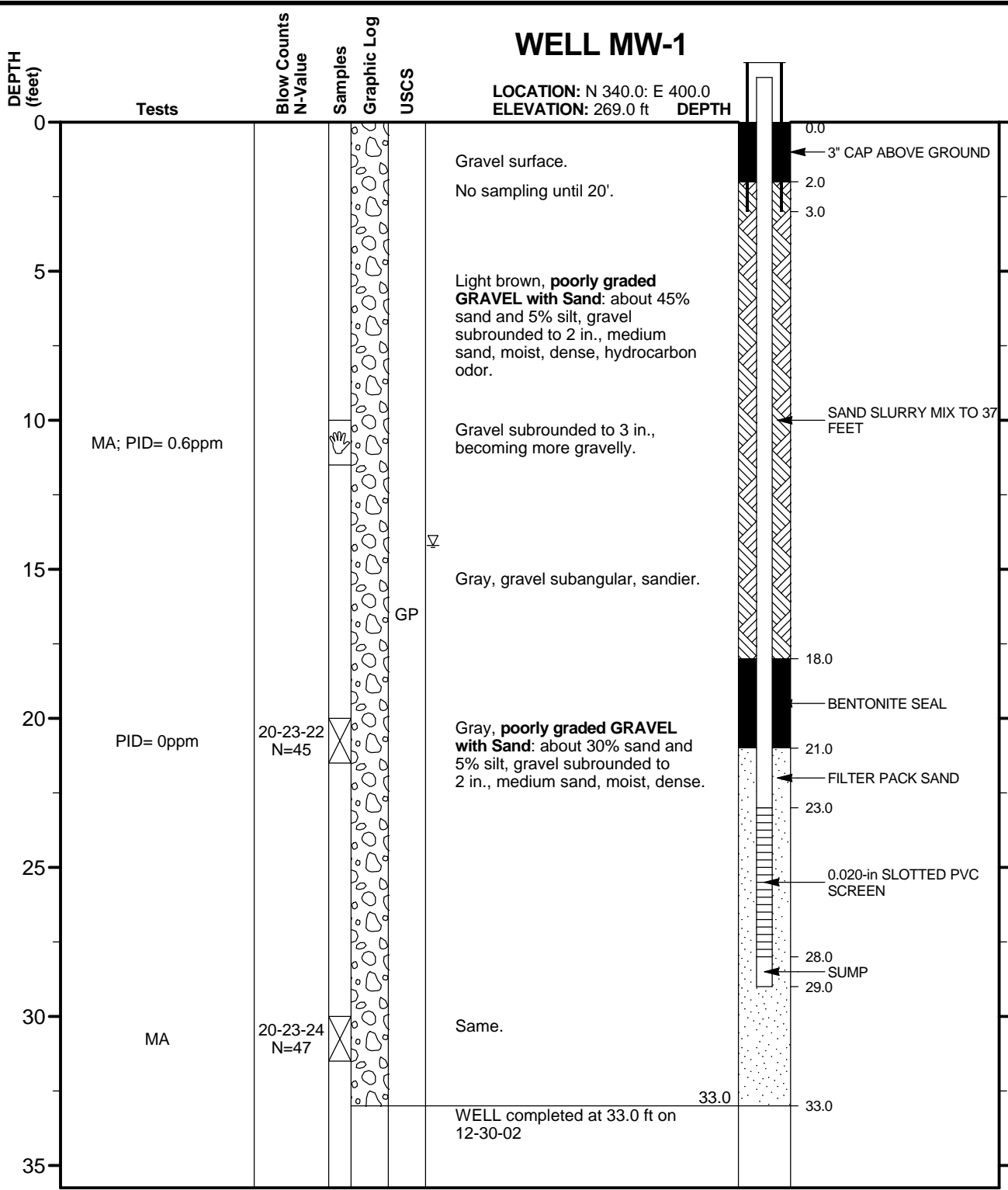


# WELL MW-1

LOCATION: N 340.0: E 400.0  
ELEVATION: 269.0 ft DEPTH



**SAMPLE LEGEND:** Grab Sample Split Spoon

**KEY**  
MA = Mechanical Analysis  
PID = Photoionization Detector

**CONTRACTOR:** AAAAA Drilling  
**EQUIPMENT:** CME-85  
**OPERATOR:** I. Core  
**METHOD:** Hollow-Stem Auger

**CLIENT:** XYZ Corporation  
**PROJECT:** Highway 1 Expansion  
**LOGGED BY:** A. Bore  
**DATE COMPLETED:** 12-30-02  
**JOB NUMBER:** ABCD-1234

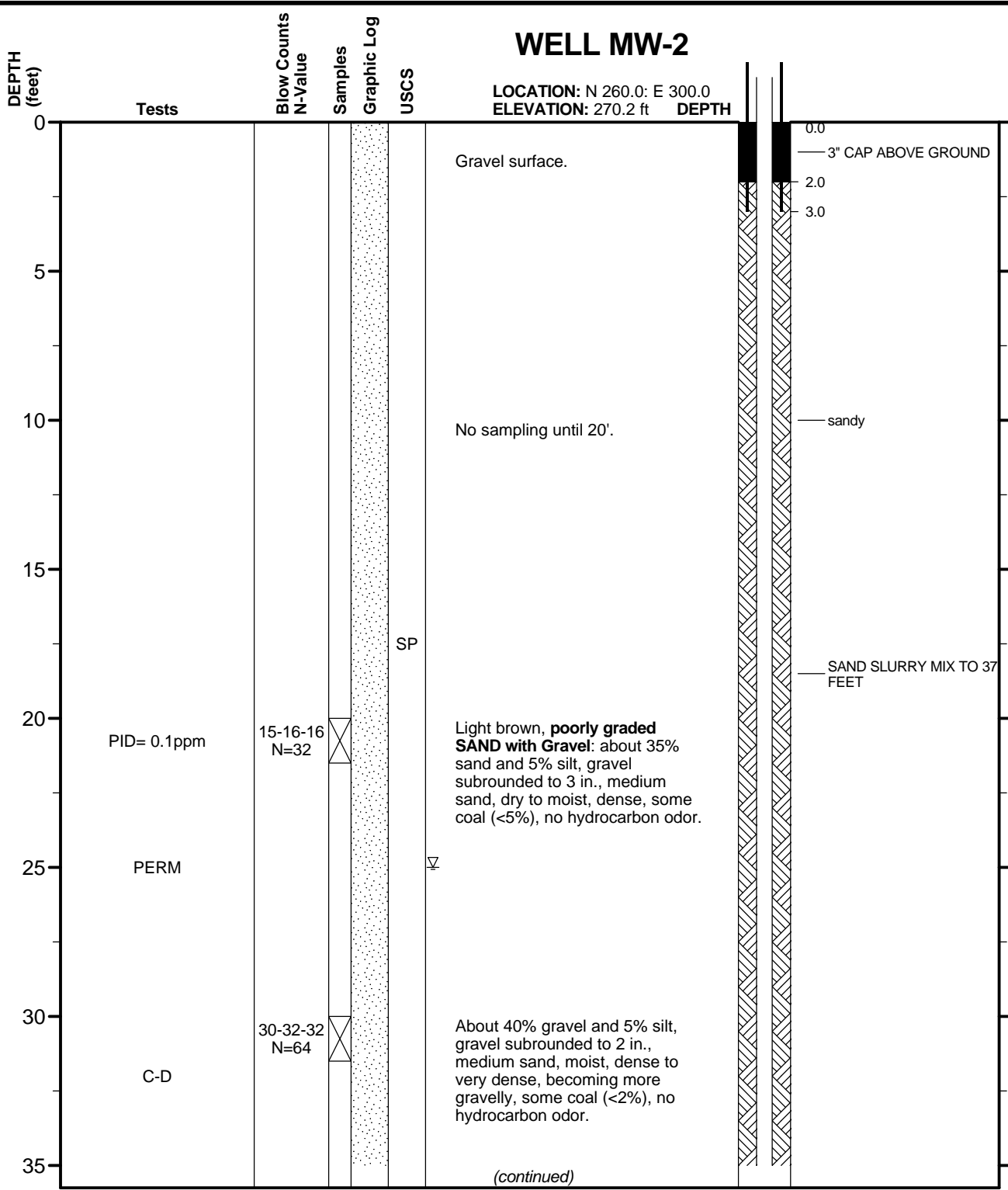
LOGO

ACME Consulting  
1234 Main Street  
Telephone: (000) 555-1234  
Fax: (000) 555-4321

**FIGURE B-7**

# WELL MW-2

LOCATION: N 260.0: E 300.0  
ELEVATION: 270.2 ft DEPTH



SAMPLE LEGEND: ☒ Split Spoon

**KEY**  
 PERM = Permeability Test  
 C-D = Triaxial Shear Test - consolidated drained  
 PID = Photoionization Detector

**CONTRACTOR:** AAAAA Drilling  
**EQUIPMENT:** CME 85  
**OPERATOR:** I. Core  
**METHOD:** Hollow-Stem Auger

**CLIENT:** XYZ Corporation  
**PROJECT:** Highway 1 Expansion  
**LOGGED BY:** A. Bore  
**DATE COMPLETED:** 12-30-02  
**JOB NUMBER:** ABCD-1234

LOG-A-NWNL01 LOG-A-NWNL01.GPJ LOG-A-NWNL01.GDT 7/21/04

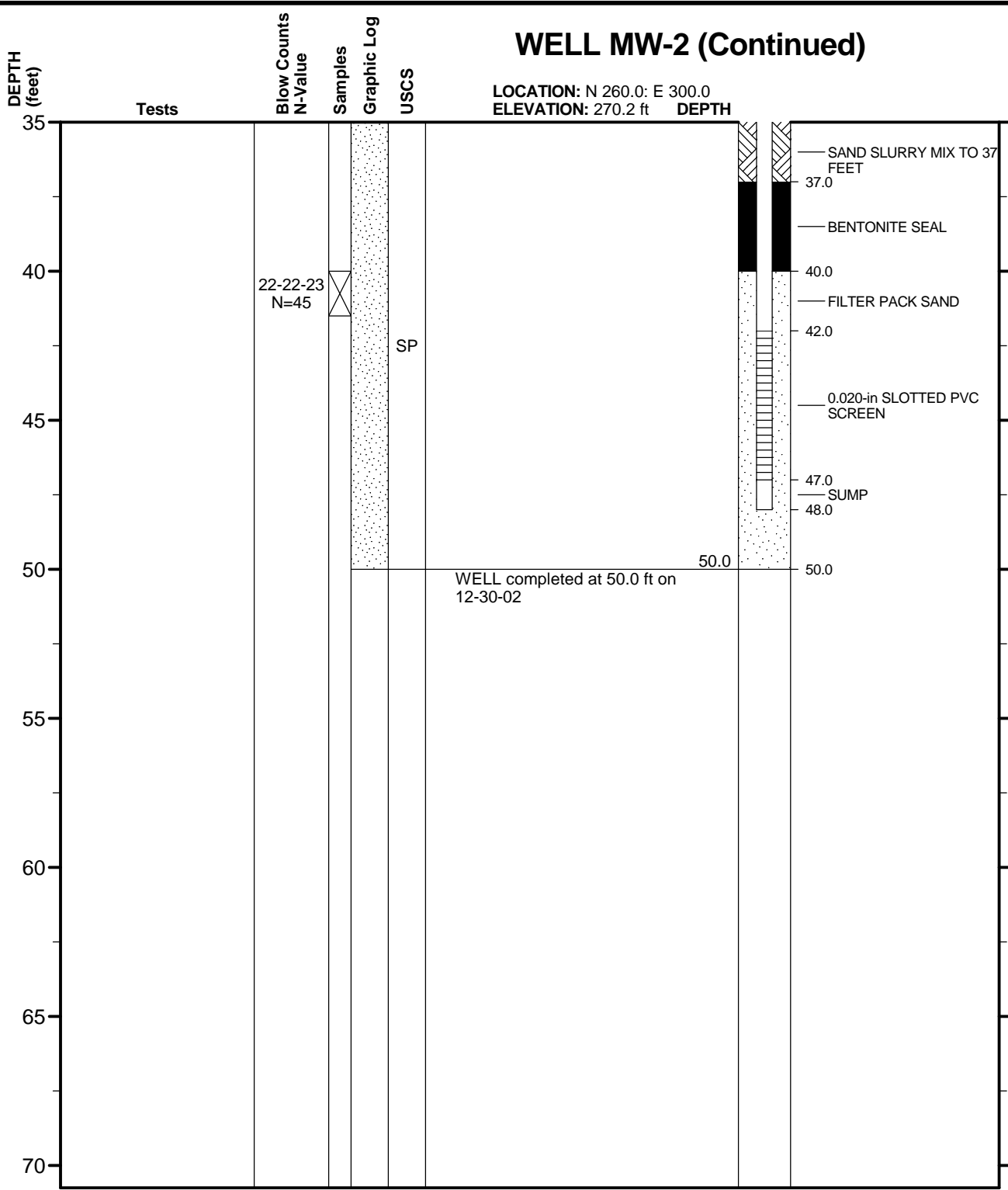
LOGO

ACME Consulting  
 1234 Main Street  
 Telephone: (000) 555-1234  
 Fax: (000) 555-4321

**FIGURE B-8a**

# WELL MW-2 (Continued)

LOCATION: N 260.0: E 300.0  
ELEVATION: 270.2 ft DEPTH



**SAMPLE LEGEND:** ⊗ Split Spoon

**KEY**  
 PERM = Permeability Test  
 C-D = Triaxial Shear Test - consolidated drained  
 PID = Photoionization Detector

**CONTRACTOR:** AAAAA Drilling  
**EQUIPMENT:** CME 85  
**OPERATOR:** I. Core  
**METHOD:** Hollow-Stem Auger

**CLIENT:** XYZ Corporation  
**PROJECT:** Highway 1 Expansion  
**LOGGED BY:** A. Bore  
**DATE COMPLETED:** 12-30-02  
**JOB NUMBER:** ABCD-1234

LOG-A-NWNL01 LOG-A-NWNL01.GPJ LOG-A-NWNL01.GDT 7/21/04

LOGO

ACME Consulting  
 1234 Main Street  
 Telephone: (000) 555-1234  
 Fax: (000) 555-4321

**FIGURE B-8b**