

# Log of Borehole B-1

Project No. ABC-14D

Figure No. 2

Project: gINT Example

Sheet No. 1 of 2

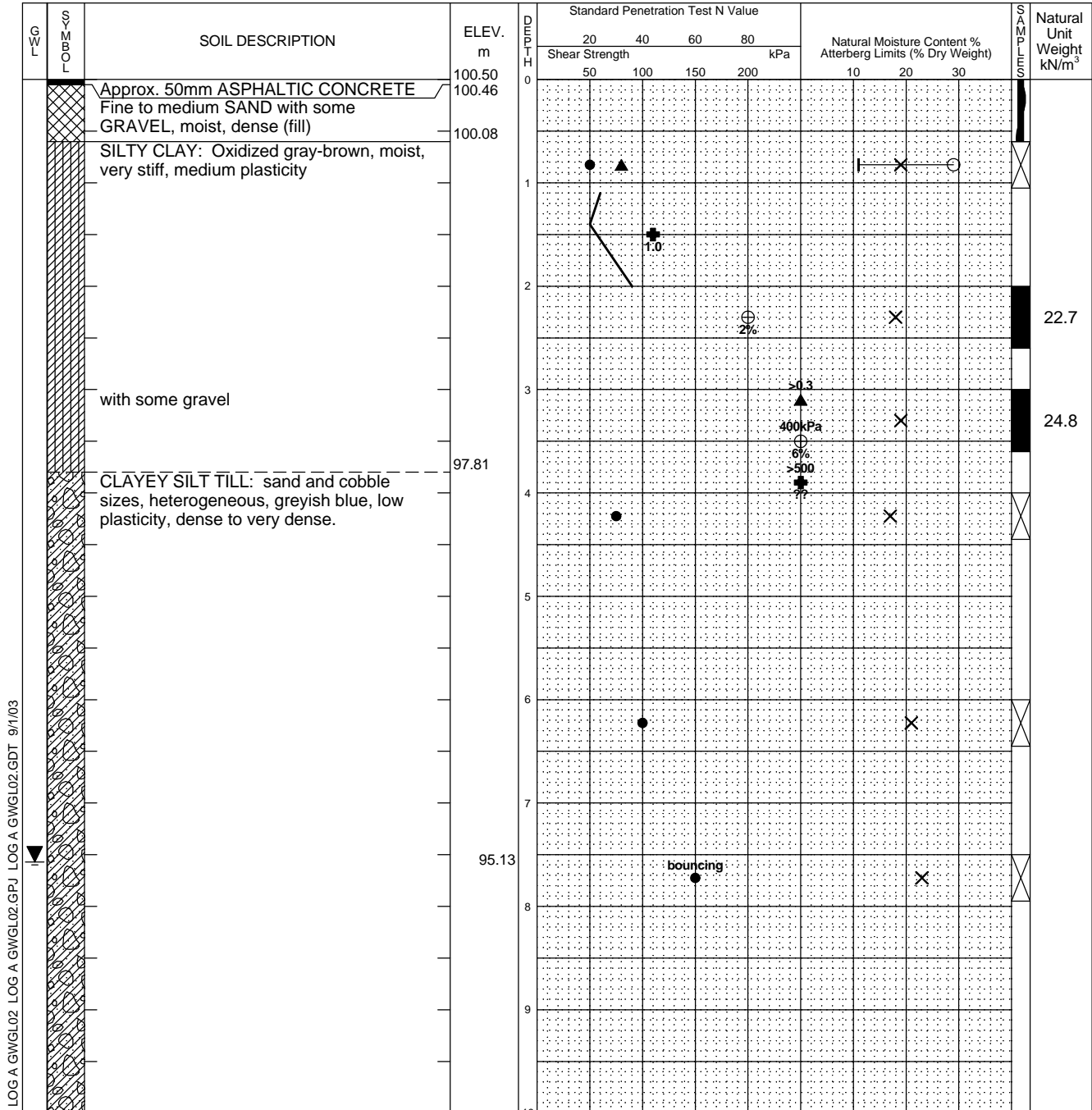
Location: Someburg Mega Mall This borehole is located 100m northwest of northwest corner of Post Office.

Date Drilled: 9/1/03

Drill Type: ACME Z-99

Datum: MSL

- Split Spoon Sample ☒
- Auger Sample ▮
- SPT (N) Value ●
- Dynamic Cone Test —
- Shelby Tube ■
- Shear Strength by Vane Test ⊕
- Natural Moisture Content X
- Atterberg Limits ⊖
- Undrained Triaxial at % Strain at Failure ⊕
- Shear Strength by Penetrometer Test ▲



Continued Next Page

**LOGO**  
 ACME Consultants  
 1234 Main Street  
 Somewhere, CANADA  
 Telephone: (000) 555-1234  
 Fax: (000) 555-4321

Time	Water Level (m)	Depth to Cave (m)
ATD	5.5	---
Completion	6.8	---
2 hrs AC	7.5	8.5
Well Developed	8.0	---
24 hrs AWD	7.6	---

# Log of Borehole B-1

Project No. ABC-14D

Figure No. 2

Project: gINT Example

Sheet No. 2 of 2

G W L	S O I L D E S C R I P T I O N	ELEV. m	D E P T H	Standard Penetration Test N Value				Natural Moisture Content % Atterberg Limits (% Dry Weight)			S O I L T E S T S	Natural Unit Weight kN/m <sup>3</sup>
				Shear Strength								
				20	40	60	80	kPa	10	20		
	CLAYEY SILT TILL: sand and cobble sizes, heterogeneous, greyish blue, low plasticity, dense to very dense. <i>(continued)</i>	93.43	10									
			11									
	End of borehole at 11.8 m	92.16										
	<p><u>Notes:</u> Well cover locked and flush with grade</p>											

LOG A GWGL02 LOG A GWGL02.GPJ LOG A GWGL02.GDT 9/1/03

LOGO

ACME Consultants  
 1234 Main Street  
 Somewhere, CANADA  
 Telephone: (000) 555-1234  
 Fax: (000) 555-4321

Time	Water Level (m)	Depth to Cave (m)
ATD	5.5	---
Completion	6.8	---
2 hrs AC	7.5	8.5
Well Developed	8.0	---
24 hrs AWD	7.6	---

# Log of Borehole MW-1

Project No. ABC-14D

Figure No. 3

Project: gINT Example

Sheet No. 1 of 2

Location: Someburg Mega Mall This borehole is located 100m northwest of northwest corner of Post

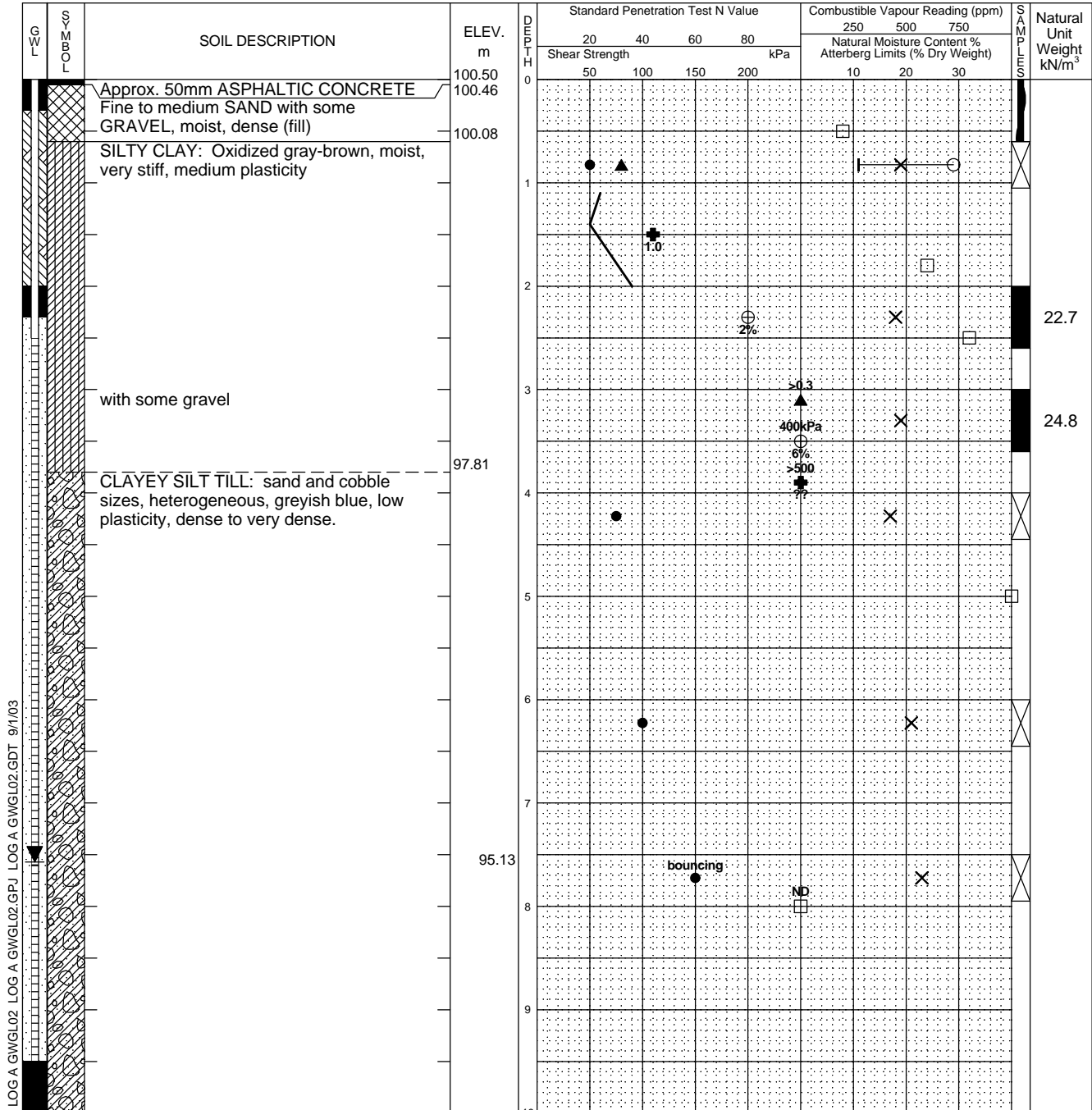
Office: \_\_\_\_\_

Date Drilled: 9/1/03

Drill Type: ACME Z-99

Datum: MSL

- |                             |   |   |   |
|-----------------------------|---|---|---|
| Split Spoon Sample          | ☒ | Combustible Vapour Reading                | □ |
| Auger Sample                | ▮ | Natural Moisture Content                  | × |
| SPT (N) Value               | ● | Atterberg Limits                          | ⊔ |
| Dynamic Cone Test           | — | Undrained Triaxial at % Strain at Failure | ⊕ |
| Shelby Tube                 | ■ | Shear Strength by Penetrometer Test       | ▲ |
| Shear Strength by Vane Test | ⊕ |   |   |



Continued Next Page

**LOGO**  
 ACME Consultants  
 1234 Main Street  
 Somewhere, CANADA  
 Telephone: (000) 555-1234  
 Fax: (000) 555-4321

Time	Water Level (m)	Depth to Cave (m)
ATD	5.5	---
Completion	6.8	---
2 hrs AC	7.5	8.5
Well Developed	8.0	---
24 hrs AWD	7.6	---

# Log of Borehole MW-1

Project No. ABC-14D

Figure No. 3

Project: gINT Example

Sheet No. 2 of 2

G W L	SOIL DESCRIPTION	ELEV. m	D E P T H	Standard Penetration Test N Value				Combustible Vapour Reading (ppm)			Natural Unit Weight kN/m <sup>3</sup>
				20	40	60	80	250	500	750	
				Shear Strength kPa				Natural Moisture Content % Atterberg Limits (% Dry Weight)			
		93.43	10	50	100	150	200	10	20	30	
	CLAYEY SILT TILL: sand and cobble sizes, heterogeneous, greyish blue, low plasticity, dense to very dense. <i>(continued)</i>										
		92.16	11								
	End of borehole at 11.8 m										
	Notes: Well cover locked and flush with grade										

LOG A GWGL02 LOG A GWGL02.GPJ LOG A GWGL02.GDT 9/1/03



ACME Consultants  
1234 Main Street  
Somewhere, CANADA  
Telephone: (000) 555-1234  
Fax: (000) 555-4321

Time	Water Level (m)	Depth to Cave (m)
ATD	5.5	---
Completion	6.8	---
2 hrs AC	7.5	8.5
Well Developed	8.0	---
24 hrs AWD	7.6	---