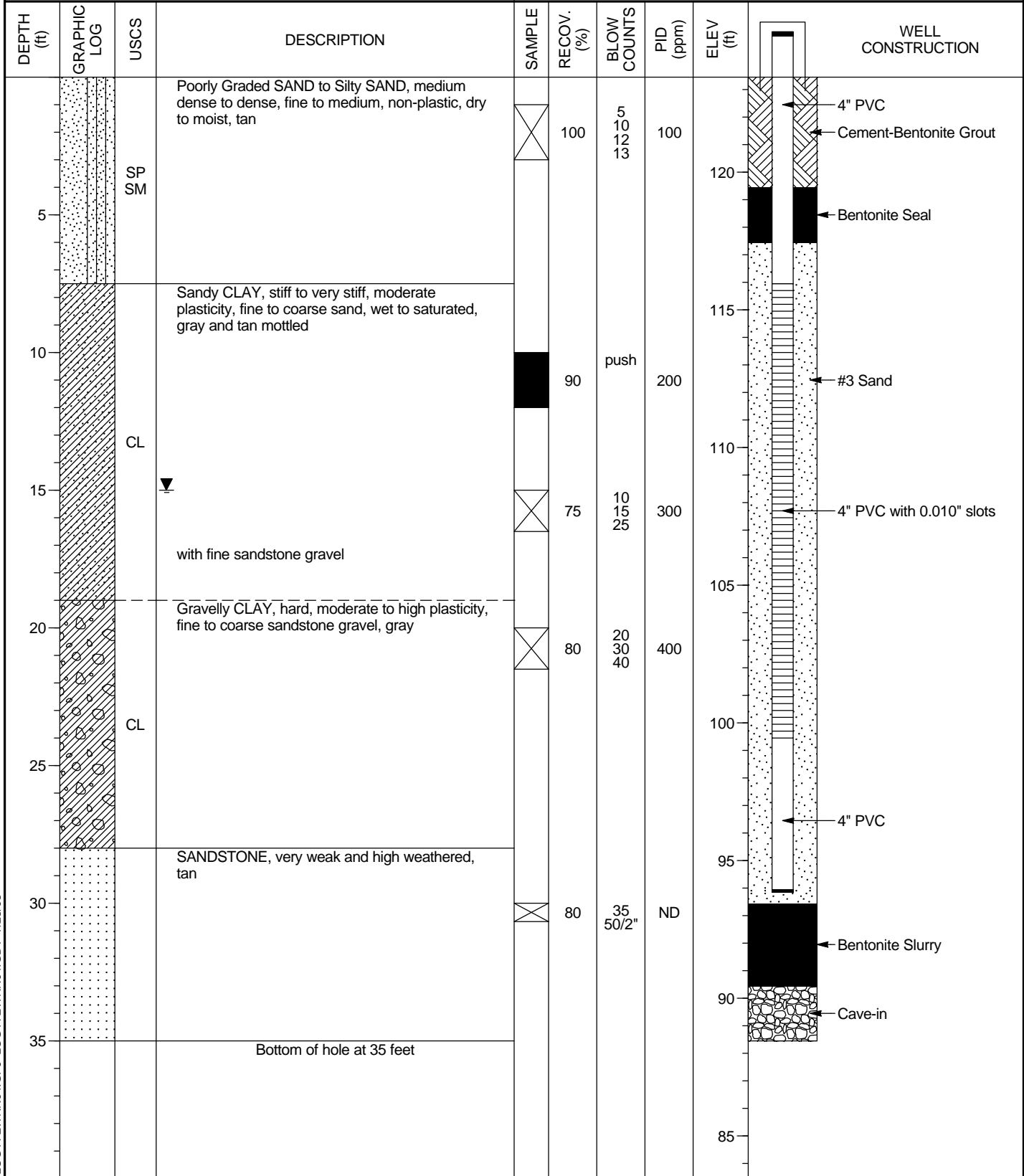


PROJECT: gINT Example	WELL / BORING NO: MW-1		
LOCATION: Somewhere, USA			
STARTED: 7/24/03	COMPLETED: 7/25/03	NORTHING: 12345	EASTING: 54321
DRILLING COMPANY: AAAAA Drilling		ELEVATION: 123.45	M.P. ELEV: 124.35
DRILLING EQUIPMENT: ACME Z-99		WATER: 15 ATD	TOTAL DEPTH: 35.0
DRILLING METHOD: Hollow Stem Auger		LOGGED BY: I. Core	CHECKED BY: A. Bore



LOG A EWNN04.GPJ LOG A EWNN04.GDT 7/28/03