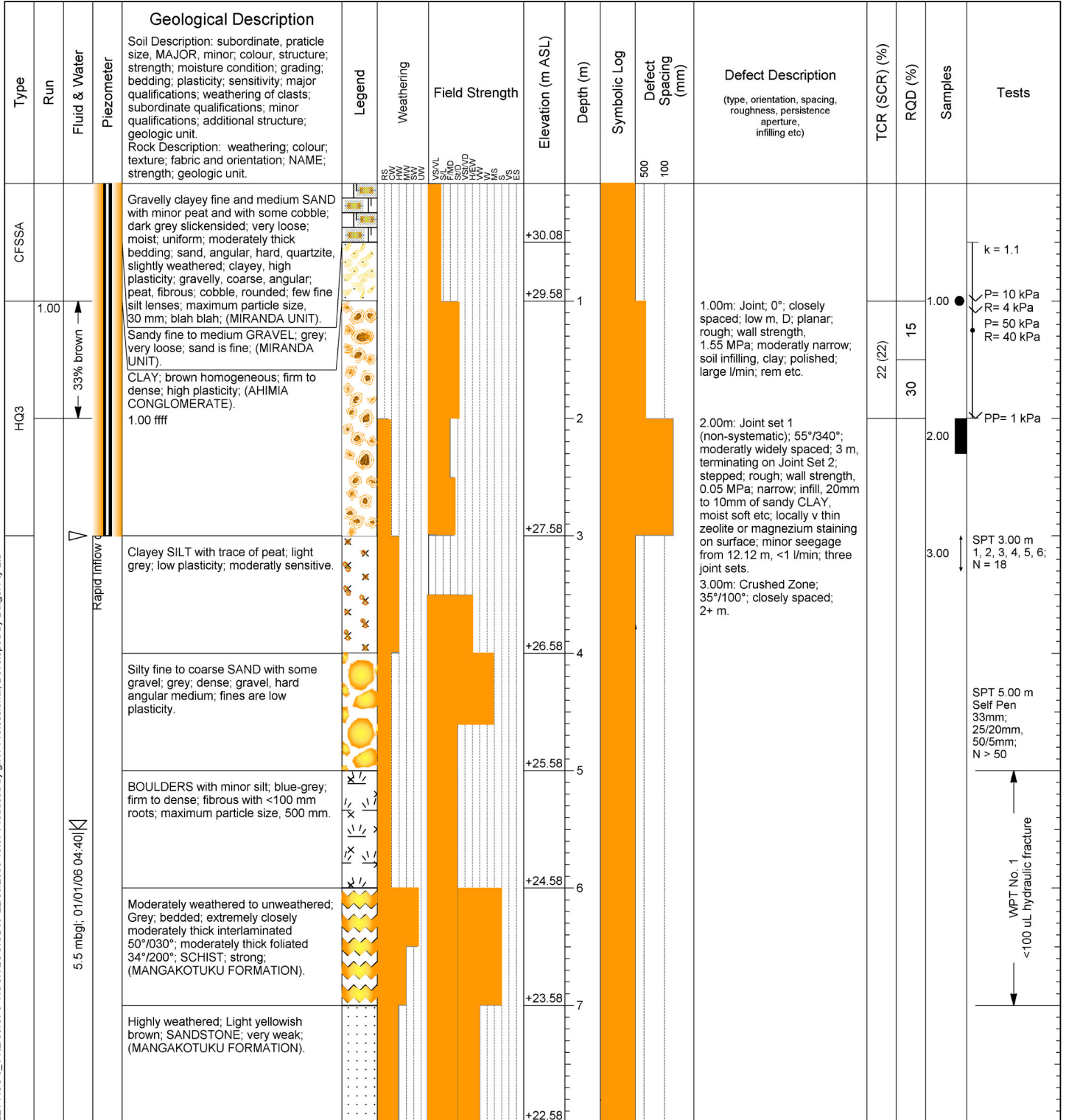


DRILL HOLE LOG

Project: gINT AGS Sample Project		Feature		Location: Plant Site		No.:
Job No.: 1234/ABC	Start Date: 01-01-06 Finish Date: 02-01-06	Ground Level (m ASL): 30.58	Co-Ordinates (NZMG): E 654,703.6 N 123,663.3			
Contractor: AAAAA Site Investigations			Rig/Plant Used: Machine Excavator			Sheet: 1 of 2



RILEY AGS 3_1 NZ LIB 06 G6B Log RILEY DH RILEY AGS 3_1 NZ 06 GPJ ROCK LOG.GDW 22/03/2006 10:57 Produced by gINT Professional, Developed by Daigel Pty Ltd

Explanations:

Rock Mass Weathering - unweathered, slightly weathered, moderately weathered, highly weathered, completely weathered, residually weathered
 Relative Rock Strength - extremely weak, very weak, weak, moderately strong, strong, very strong
 TCR - Total Core Recovery
 SCR - Solid Core Recovery
 RQD - Rock Quality Designation
 Attitude of discontinuities displayed as Dip/Dip Direction and Trend/Plunge

- Small Disturbed Sample
- Large Disturbed Sample
- ⊕ Scala Penetrometer - blows/100mm
- ⊖ Permeability Test
- U100 Undisturbed Sample
- ∠ Insitu Vane Shear Strength (kPa)
- UTP = Unable to penetrate



Remarks

a remark - it was deep
 6.00: Rel. St. - a
 2.00: Weath. - aweth

All dimensions in metres
 Scale 1:50

Client:
 Ministry of Silly Walks

Hole Depth:
 9.00 m

Driller:
 ABC

Logged by:
 JJB

Checked by:
 JJB