

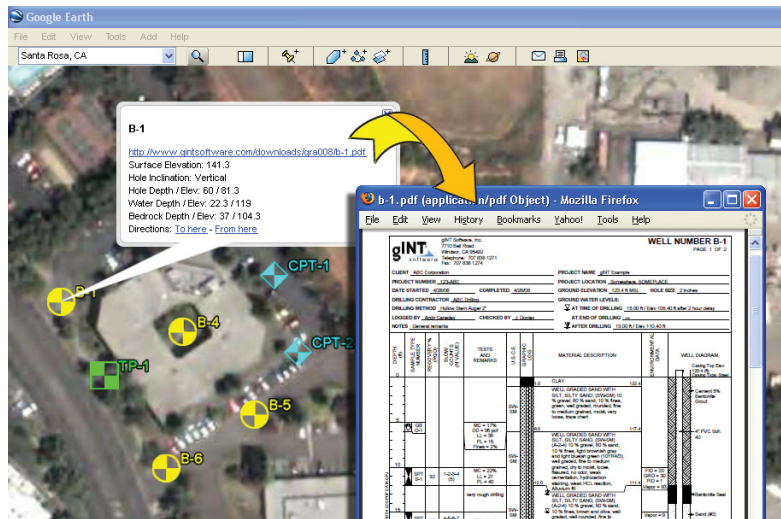


gINT and Google Earth™

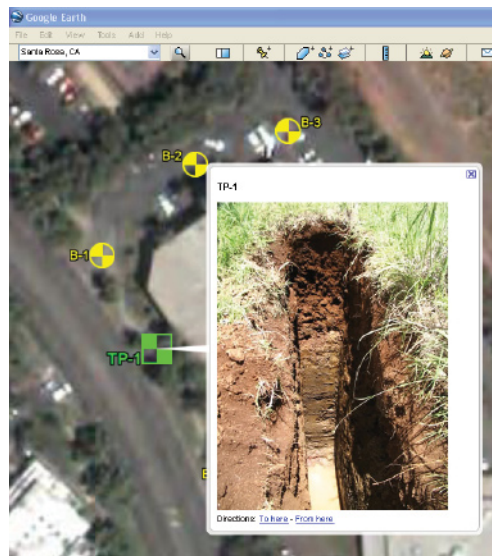
View Your Boreholes in Google Earth

With gINT version 8.2 you can publish your boreholes directly to Google Earth. You specify the icon, label, color and associated description using gINT's easy new Google Earth Setup dialog.

You can also provide a description for each borehole that will appear when the user clicks the borehole icon in Google Earth. The description can contain links to any type of file, including images and PDFs, enabling you to provide a substantial amount of additional information for each borehole.



Click icon to display borehole descriptions, including links to PDFs



Click icon to display photos

Automatically Display Any Data or Calculations

Beyond manually entering the Google Earth content for descriptions, you can write rules that will automatically display combinations of data and/or calculations from your gINT projects—e.g., automatically display depth and elevation of bedrock or assign different icons to differentiate boreholes and test pits. Mark outcrops, add photos, indicate slope failures, etc. Content is completely customizable.

We can assist you in any Google Earth customization or development of gINT Rules code customized to your specifications.



Click icon to display borehole details